



## TRANSPORT ON TRACK



■ Lightweight Scaffolding running on track.....	1/4	■ Crawler Conveyor.....	7/4
■ Movable Scaffolding Bridge.....	2/4	■ Rail Bicycle for Track Inspection.....	8/4
■ Trolleys.....	3/4	■ Transport Set on Track.....	9/4
■ Manual Lightweight Platform Trolleys.....	4/4	■ Rail-Road Vehicle.....	10/4
■ Motorized Lightweight Platform Trolleys.....	5/4	■ Track Inspection Vehicle.....	11/4
■ Wheels on rails.....	6/4	■ Trolley for Transport of Ballast in Bags.....	12/4



## LIGHTWEIGHT MOVABLE SCAFFOLDING

**USE:** Work in Tunnel and Underground.

**ADVANTAGES:** Ultra-Lightweight Equipment, it is easy to use and transport and very safe to operate. APAVE / VERITAS Inspection Certificate on request.

This Scaffold may be manually pushed along the Track (Rail and Underground / Metro) and it features a Security «Dead Man's» Control Braking Device acting on Wheels simultaneously.

**Technical characteristics** (Assembly and dismantling : 2 Operating Agents in 20 min.)

- 1 Lorry with Ø 250 mm Wheels (all aluminium)
- 1 Identical Lorry with « Dead-Man's » Control Device acting on 2 Wheels simultaneously.
- 1 Complete Set of **ALUMINIUM** Scaffold with Movable Floors, Plinths and Handrails.
- Dimensions : ▷ **ECR-1** (on 1 Track) = 2.6 x 1.90 m.
- ▷ **ECR-12** (on 2 Tracks) = 2.6 x 6.5 m.

**OPTION** : 2 Lateral Extensions, Width 0.60 m / 1 m. - (Photo 3)

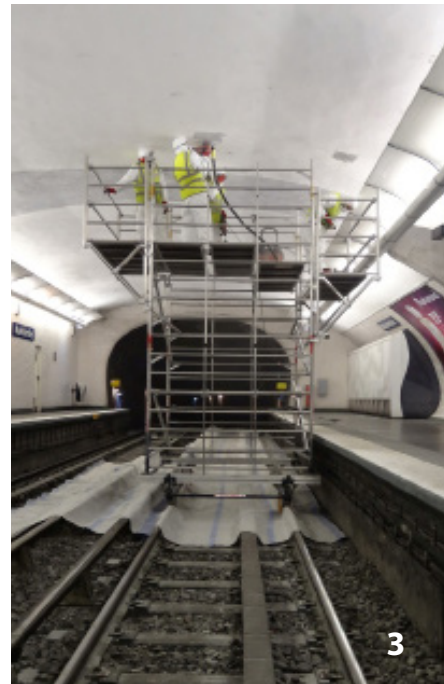
- References** :
- ▷ Scaffold : **ECR-1/ ECR-12**
  - ▷ Lateral Extension : **DL-1** (0.6 or 1 m.)
  - ▷ Safety Rail Tong : **TS (Photo 2)**



**ECR-1**



Safety Rail Tong - Ref. **TS**  
for Works with Lateral Extensions



Working in Metro Station  
**ECR-1 + (2 DL-1)**

### OPTIONS

- **Safety Rail Tong with Rollers** (Photo 2) **for Lateral Extension** - Reference : **TS**
- **Scaffold** for all other Track Gauges and all other Height up to 7.5 m (to be specified)
- **ECR-12** : Double Scaffold with Floor : 6.50 x 2.6 m. (on 2 Tracks)
- **PER-1** Double Scaffold with Extensions on the 2 Platforms (Total Length of the Floor = 10 m)



## PER-1 MOVABLE SCAFFOLDING BRIDGE

**USE:** Maintenance Works of Tunnels and Underground (Metro)

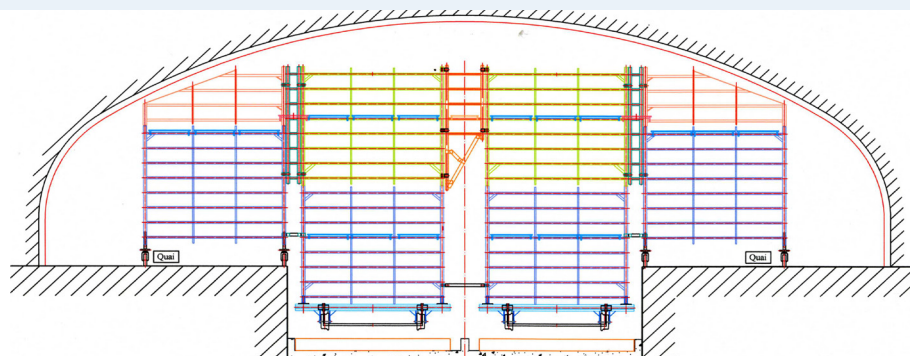
**ADVANTAGES:** Ultra-light Equipment allowing the complete Maintenance Works in Tunnel, on all the width, and with a Total Safety.

This Movable Scaffolding Bridge runs simultaneously on the two Tracks, and the 2 sides of the Platforms.

It is completely adjustable in height as the layout of the Station. Its components in aluminium-tubes are very light, and easy to assembly by 4 Workers in 20-25 minutes.

It is equipped with brakes on Tracks, and on Platforms.

The **PER-1** Scaffolding-Bridge is approved by «APAVE» Office.



### TECHNICAL CHARACTERISTICS :

#### 1) ON THE TRACKS

- 4 Aluminium Lorries with Wheels dia. 250 mm., of which two are equipped with brakes.
- 2 Complete Scaffoldings in aluminium, with movable floors, plinths and handrails, on the 4 lorries.

#### 2) ON THE PLATFORMS

- 2 Aluminium Scaffolds, adjustable in height, with movable floors, plinths and handrails.
- 2 Support-Scaffolds with nylon Wheels, equipped with brakes.

**Dimensions :** Width . . . . . 2,60 m.  
Length . . . . . 9,90 m.  
Height . . . . . Adjustable in function of the layout of Tunnels.



## TROLLEYS - LORRIES

**USE:** Transporting Various of Equipment on the Tracks, such as Rails, Sleepers, Switch and Crossings, etc.

**ADVANTAGES:** Durable Trolleys that comply with the Conditions for Circulation on the Tracks.

Material	Force Unit Tons	REFERENCES			Net Weight Trolley for Standard Gauge (Kg)
		Simple Trolley	With Plate Pivoting and Rail Sliding	With Bracket Loading Rail (x)	
Steel	5	<b>S5</b>	<b>S5PC</b>	-	100
Aluminium	2	<b>AS2</b>	-	-	40
Aluminium	5	<b>AS5</b>	-	-	80
Steel	10	<b>S10</b>	<b>S10PC</b>	<b>S10PCR</b>	175
Steel	15	<b>S15</b>	<b>S15PC</b>	<b>S15PCR</b>	240
Steel	20	<b>S20</b>	-	-	270
Steel	50	<b>S50</b>	-	-	330

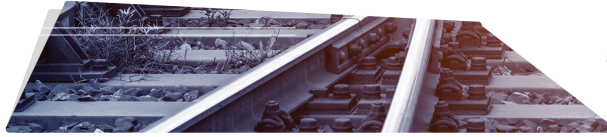
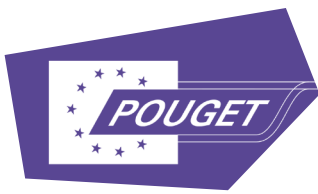
((x) The Bracket can be positioned either :

- on the Centre of Trolley
- at One of the End of Trolley



### OPTIONS

- **BRAKE DEVICE** using wooden brake blocks, controlled by a hand lever - ref. **FM**
- **WHEELS** - See Tech. Spec. No. **6/4**
- **MANUAL LIGHTWEIGHT PLATFORM TROLLEYS** - See Tech . No. **4/4**



## MANUAL LIGHTWEIGHT PLATFORM TROLLEYS - NEW GENERATION

**USE:** Transport of all equipment and materials on the track over short distances.  
Max load : 500 Kg to 2 tons.

**ADVANTAGES:** Guaranteed, lightweight (aluminium) and tough equipment that offers total safety of use.

All our platform Trolleys are equipped with **BRAKING DEVICES** and the 4 wheels are electrically insulated.

They are designed with 2 side handles for manipulation by the Operating Agents.

Standard dimensions (for 1.44 m track) : **175 x 75 cm** / (for Metric Gauge) : 132 x 75 cm

The Brake Lever can be positioned on the two sides and is dismantable.

REFERENCES		Load Capacity (Kg)	Parking Brake on 2 Wheels	AUTOMATIC BRAKE		Weight (Kg)
				on 2 Wheels	on 4 Wheels	
<b>PL1T</b>		500	x			48
<b>PL2T</b>		1000	x			52
<b>PL5S</b>		2000		x		63
«SNCF» AGREED						
STANDARD	LGV Ref. (*)					
<b>PL1S</b>	<b>PL1S-LGV</b>	500		x		53
<b>PL2S</b>	<b>PL2S-LGV</b>	1000		x		57
<b>PL3S</b>	<b>PL3S-LGV</b>	500			x	55
<b>PL4S</b>	<b>PL4S-LGV</b>	1000			x	59

(\*) **LGV Models**, New Generation are authorized to circulate on High Speed Lines and on Standard Tracks. Height of the Floor at the Running Surface of the rail = 280 mm

**Double lightweight platform Ref. PL5S-GR Trolley** with automatic brakes and Lateral wheels  
**Load capacity** : 2000 Kg  
**Dimensions** = 200 x 175 cm

### OPTION

- **MOTORIZED PLATFORM** - See Sheet No. 5/4
- **LARGE-WIDTH PLATFORM TROLLEY** - Ref. **GL**
- **SIDE ROLLERS** - Ref. **GR**
- **ODOMETER** with Trolley - Tech. Spec. No. 6/7

**Manual Super-Lightweight Platform Trolley** - Ref. **PL6S**  
**Load Capacity** : 500 Kg  
**Dimensions** = 175 x 50 cm  
**Weight** : **25 Kg**



coupled with Odometer

Braking with Linkage





# LIGHTWEIGHT MOTORIZED TRANSPORT PLATFORM <sup>®</sup>

## CHARACTERISTICS : Over Long Distances

- All Aluminium Construction
- Rubber Tired Wheels with Lateral Guiding Rollers
- Motorization unconnected by Portable S.1.P. Wrench
- Reverse Direction operated by the Portable Wrench Rotation.
- Feed in function of the Portable Machine Rotation Speed (3-10 Km/H)
- Load Capacities (See below Table)
- Double Control Braking's Device (type Dead-Man) :
  - ▷ Manual Braking by demountable Lever
  - ▷ Treadle Braking functionned by the Operating Agent
- Protection by Lateral Guards
- Weight as the Platform's sizes (110 Kg - 140 Kg)
- Lateral Transport Handles .



Platform sizes (cm) for Gauge 1.44 m	Load Capacity (Kg)	Quantity of Seats Operating Agents (on request)	REF.
175 x 75	500	0	<b>PM-10</b>
175 x 100		2	<b>PM-11</b>
175 x 200		4	<b>PM-12</b>
175 x 75	1 000	0	<b>PM-20</b>
175 x 100		2	<b>PM-21</b>
175 x 200		4	<b>PM-22</b>
175 x 75	1 500	0	<b>PM-30</b>
175 x 100		2	<b>PM-31</b>
175 x 200		4	<b>PM-32</b>
175 x 240	2 000	2	<b>PM-41</b>



The « **MOBEC** » Lighting Set can be stand on the Motorized Platform Trolley. It lights 3000 m<sup>2</sup> of surface over 360°.

## OPTIONS

- **Seats** for Transport of the Operating Agents
- **Sheet Protection**
- **Lighting Balloon** « **MOBEC** », Height 5 m. - Power 4000 W. (See Tech. Spec. No. **5/8**)



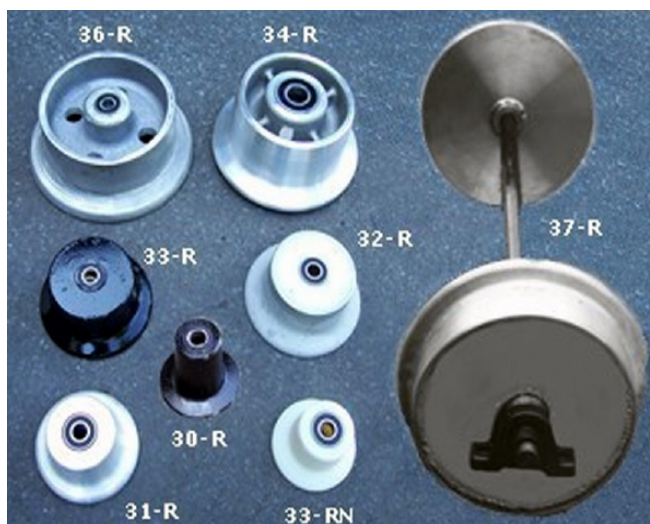
## WHEELS ON RAILS

**USE:** For all Rolling Stock on Track : Platform - Bogies - Machines, etc.

**ADVANTAGES:** Tough Products that comply with the conditions for travelling on Tracks.

Reference	Material	DIAMETERS		Load Capacity Unit (T)	Weight of Complete Wheel (Kg)
		on Rolling (mm)	Exterior (mm)		
<b>30-R</b>	Steel	68	118	0.5	1.8
<b>31-R</b>	Alu	105	160	0.5	2.3
<b>32-R</b>	Alu	140	200	0.5	2.8
<b>33-R</b>	Steel	140	190	1	6
<b>33-RN</b>	Nylon	140	190	0.5	4
<b>34-R</b>	Alu	220	285	1.25	10
<b>35-R</b>	Steel	250	290	3	15
<b>36-R</b>	Alu	250	320	1	8
<b>37-R</b>	Alu	500	550	2	17

Wheels are available with or without electrical insulation (specified on request)



Wheel Ref. **32-R**

### OPTIONS

- Axles with fitted Wheels - (on request)



## CRAWLERS-CONVEYORS

**USE:** To transport Tools and Equipments on Track.  
(Welding Equipments etc.)

**ADVANTAGES:** The Crawlers-Conveyors enable the Trolley to cross on top of the Rails without any difficulty.

Load max. (Kg)	Engine Power KW	Speed Km/h	Dimensions Platform (cm)	Weight (Kg)	Transmission	Ref.
500	4	AV = 4.3 AR = 3	120 x 90	197	Hydrostatical Bucket Steel	<b>HP-500</b>

- ▷ *HONDA 4-stroke Petrol Engines*
- ▷ *Rubber Crawler Tracks*
- ▷ *Clutch Brake*
- ▷ *«Dead-Man's» Control Device*
- ▷ *Dump bucket*



### OPTIONS

- **Snow Clearing Kit** (Weight 60 Kg for HP450-500) - Ref. **CN-10**
- **Crawler disengaging Gear** - Ref. **DBC**
- **Lights for Night Works** - Ref. **EHP**





## VRP-2 RAIL BICYCLE FOR TRACK INSPECTION

**USE:** Circulation on the Track for 2 Persons and to transport Materials or Tools.  
**IDEAL FOR ECOLOGICAL TRACKS**

**ADVANTAGES:** Lightweight (all aluminium) dismountable in 4 Parts and transportable by 2 Agents.

- Ø 130 mm aluminium wheels electrically insulated
- Wheels centers : 800 mm
- Brake type « dead-man» driven by one of the Operating Agents , acting on one of the Back Wheels
- Platform Trolley for Transporting of Material = 75 x 75 cm
- LOAD CAPACITY on the Platform Trolley = 300 Kg
- Speed Circulation : 10 to 20 Km/h
- The Whole Device is dismountable in 4 Parts.
- With 2 Adjustable Lateral Protection
- Weights : Aluminium Frame of 2 Bicycles :
  - ▷ Unit Weight 26 Kg
  - ▷ the Whole Devices mounted 70 Kg



The *Inspection Rail-bicycle* can be :

- ▷ Equipped with Seats on central Platform.
- ▷ Can be realized for all Track Gauges.

Overall dimensions (cm)

Type of Track	Length	Width	Height
Standard Gauge	185	107	120
Metric track	142	107	120
Track gauge 3' 6"	149	107	120

▪ **The Mounting / Dismounting time by 2 Agents :**

- ▷ **3 min.**

These Specifications are given for your information only and may be technically modified and improved.



## GMT TRANSPORT SET ON TRACK

**USE:** Multi-Transports of Operating Agents, Accident Victims and Tools ...

**ADVANTAGES:** Lightweight Equipments (all Aluminium), with Modular Units as Needs.

The **GMT** Transport Set includes :

- **1 Motorized Platform Trolley - Type PM-10** (Tech. Spec. No. 5/4) :  
2 Possible Motorizations : Power 1.7 kW or 3.1 kW
- **3 Transport Platform** equipped with Protection Guardrails :  
Unit Load Capacity : 500 Kg  
Dimensions : 175 x 100 cm

**RAIL TRAFFIC SPEED :** 4 to 6 Km/H

**NET WEIGHTS :**

- |                      |        |
|----------------------|--------|
| ▪ Motorized Platform | 110 Kg |
| ▪ Motorization Set   | 20 Kg  |
| ▪ Transport Platform | 75 Kg  |

The **GMT Transport Set** can be equipped for all kind of Transport on Tracks :

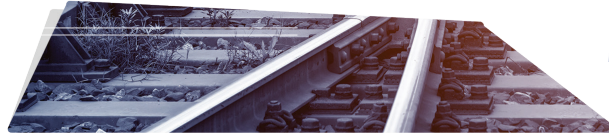
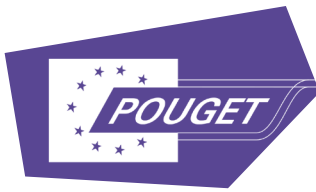
- Transport of Materials, Machines and Tools
- Transport of Operating Agents (with Multiple Seats)
- Transport for Swift Rescue Actions on Railways Sites (Opposite Pictures : Accident, etc.)



The **Quantity Transport Platform Trolleys** can be **reduced** or **increased** as your Needs.



This Transport Set is agreed by SNCF and the French Firemen Brigades for assistance on Track.



## RRV-1 RAIL-ROAD VEHICLE

4X4 Vehicle with KUBOTA Diesel Engine



LOAD CAPACITY on Track	400 Kg
Quantity of Persons :	
▪ in the Front	2
▪ in the Rear	4
Traction Power on Track	6.5 tons
Quantity of Lorries can be tracted	4
Maximum Speed on Track	30 Km/H
Maximum Speed on Switches and Crossings	8 Km/H
Acceptable Maximum Superelevation	200 mm
Percentage of Maxi Gradient	1/25
Minimum Curve Radius	80 m
Dimensions :	
▪ Length	3.4 m
▪ Width	1.82 m
▪ Height	2.1 m
▪ Net Weight	1 170 Kg



**RRV 1** can be supplied for all Gauges

**RRV-1 RAIL-ROAD VEHICLE**  
with a Traction-Bar of Lorries





## POUGET «PM-12-BEL» TRACK INSPECTION VEHICLE

The Track Inspection Vehicle **PM-12-BEL** is motor-driven. Manufacturing in ALL ALUMINIUM, and derailable very easily by 4 men.

### TECHNICAL CHARACTERISTICS

#### DIMENSIONS :

- For Standard Gauge 1435 mm : 192 x 147 cm
- Metric Gauge 1000 mm : 192 x 104 cm
- Height 150 cm + dismantled at 2.05 m

**SPEED RUNNING** : 0 to 6 Km/H

**WEIGHTS** : Vehicle = 150 Kg / Generating Set = 150 Kg

**LOADING CAPACITY** : 1000 Kg

**SOUND LEVEL** : Electric Motor = 54 dB(A) / Generating Set = 62 dB(A)

Equipped with **3 Seats** for the Agents, and **1 Seat** for the Driving Operator.

#### MOTORIZATION :

- 1 Electric Motor : 3 kW - Triphase 380 V - 50 hZ
- 1 Generating Set - 5 kW - Triphase 380 V - 50 Hz

#### RUNNING DEVICE / BRAKES

- 2 Aluminium Wheels, electrically insulated Ø 250 mm
- 2 Aluminium Wheels, with Rubber Tire electrically insulated Ø 280 mm
- 2 Brakes by foots on the Wheels-Rubber Tire.
- 1 «Dead-Man» foot brake, actionned by the Operator.
- 1 Reversing Gear (Front / Rear)
- 1 Control Pulpit, with reversing-gear device, Stop, and PROXYDRIVE Speed Converter.

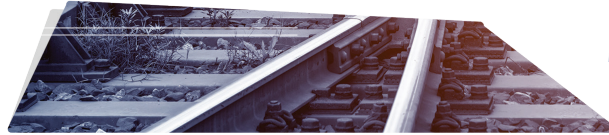
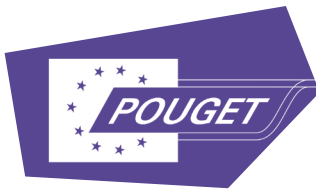
#### SAFETY DEVICES

- Demountable Lateral Guardrails (Height 1 m.)
- 4 Signal Lamps (Red/White) with led bulb.
- 2 Led Projectors 100 W / 230 W for the night works.



TRANSPORT ON TRACK

*Tese Specifications are given for your information only  
and may be technically modified and improved.*



## TROLLEY FOR TRANSPORT OF BALLAST IN BAGS (PATENTED)

- With hydraulic jacks of lifting (operated by a Manual Pump)
- Platform-Trolley equipped with an automatic brake on 2 wheels
- CAPACITY 2 Tons
- Net Weight 2.8 tons (with loading of ballast)
- Weight of the Plateform-trolley (only) = 72 Kg
- Reference : **LTMS-2T**



Transport of bags with ballast



The bags with ballast can be put into the platform-Trolley for the Transport on the Track.

The frame is equipped with 4 Hydraulic Jacks of lifting allowing the crossing above the track obstacles.





## NOTES







8, allée du Val du Moulin - B.P. 69  
93240 STAINS - FRANCE

Tél. : 33. (0) 1.48 26 62 12 / +33 (0) 9 75 90 59 48

Fax : 33. (0) 1.48.22.37.15

E-mail : [pouget.rail@wanadoo.fr](mailto:pouget.rail@wanadoo.fr)

[www.pougetrail.com](http://www.pougetrail.com)



# CATALOGUE

## MACHINES & TOOLS

for Track Construction and Maintenance

SINCE 1935