



## TRACK LINING AND LEVELLING WORKS



■ Gauge retaining Bars.....	1/5	■ Bill Handles.....	5/5
■ Hydraulic Rail Lifting Jacks.....	1/5	■ Track Shifting Bars.....	6/5
■ Mechanical Rail Lifting Jacks.....	2/5	■ Sleepers Spacing Bars.....	7/5
■ Levelling Telescopes.....	3/5	■ Lightweight Gantry Cranes for renewal of rails.....	8/5
■ Track Lining Ratchet-Wheels.....	4/5	■ Lightweight Trestle Gantry Crane.....	9/5



## GAUGE RETAINING BAR / DEVICE TO WIDEN OR NARROW THE GAUGE

**USE:** Gauging the Tracks.

**SAFETY:** Compulsory for tracks with broken Coachscrews or Bolts

**ADVANTAGES:** Doesn't engage the Rail Gauge.

### GAUGE RETAINING BAR

- Body made of high-resistance steel piping with hooks for the rail flange.
- Stroke = 240 mm
- Operates by tightening using a 38 mm hex head nut on the fiat.
- Length = 1.88 m. (for standard gauge 1435 mm)
- Weight = 11 Kg
- Paint : yellow vanish

The Bar is positioned **UNDER the track**



- **Electrically insulated Device** - Reference : **111**
- **No-electrically insulated device** - Reference : **111-N** (Other Gauges on request)

The Bar is positioned **ABOVE the track.**



- **Electrically insulated** - Ref. **112**  
Weight : 11 Kg

- **No-Electrically insulated** - Ref. **112-N** ▶  
Weight : 11 Kg



### OPTIONS

- Bar for other Gauges, (on request)

For **Switches and Crossings** : **Adjustable Extension Bar (in 3positions)** (Stroke 200 mm)

- Electrically insulated - Reference : **R-111**
- No-electrically insulated - Reference : **R-111-N**



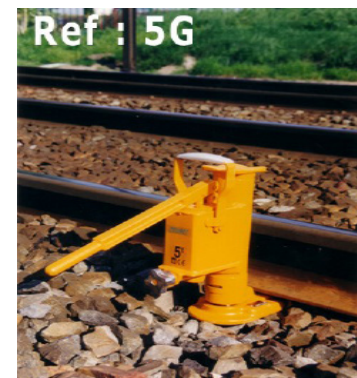
## HYDRAULIC RAIL-LIFTING JACKS

**USE:** Track Lifting.  
(Tamping - Maintenance - Levelling, etc...)

**ADVANTAGES:** Equipment to accurately lift the Track.  
Lightweight and Effective - Complies with European Safety Standards.

### LARGE STROKE HYDRAULIC JACKS

References	Force (T)	Lifting Stroke (mm)	Weight (Kg)
<b>5-G</b>	5	205	18
<b>10-G</b>	10	240	25



### HYDRAULIC JACKS (do not engage the track gauge)

References	Force (T)	Lifting Stroke (mm)	Weight (Kg)
<b>6-H (*)</b>	5	160	26
<b>10-H (*)</b>	10	130	24
<b>15-H (*)</b>	15	130	31



### OPTIONS

- (\*) **Shifting Skid of the Track** (Shifting Stroke : 40 mm) - Photo above - Ref. **P**  
(The Shifting Skid is fixed to the Rail Lifting Jack by a dismantable Axle).
- **MECHANICAL RAIL LIFTING JACKS** - Tech. Spec. No. **3/5**



## MECHANICAL RAIL-LIFTING JACKS

**USE:** Track Lifting (Repairing Works, Laying New Track, Tamping, Maintenance, etc.)  
Laying Switch and Crossings.

**ADVANTAGES:** Very Tough Equipments with Guarantee.  
Complie with European Safety Standards.

References	Force (T)	Lifting Stroke (mm)	Weight (Kg)
------------	-----------	---------------------	-------------

### JACKS BY RISING RACK with Safety Crank Handle

<b>103</b>	5	400	42
<b>102-B</b>	10	825	71

### JACKS BY RISING BEAM with Safety Crank Handle

<b>105</b>	3	350	25
<b>101</b>	5	360	34
<b>101-C</b>	10	320	45
<b>101-D</b>	16	320	72
<b>101-E</b>	20	300	97

### TAMPING JACKS WITH OPERATING LEVER

(does not engage the Rail Gauge)  
Complete with Crank Handle  
Length 1.45 m (Weight Lever = 7 Kg)

Ref.	Force (T)	Lifting Stroke (mm)	Weight (Kg)	Shoe
<b>106</b>	5	200	25	Steel
<b>106-L</b>	5	200	20	Alu

Shifting Skid - Ref. **P**  
(for Rail Lifting Jack - Ref. **106** and **106-L**)

References	Force (T)	Lifting Stroke (mm)	Weight (Kg)
------------	-----------	---------------------	-------------

### SIMPLEX JACKS BY RISING RACK with Pawl

<b>107</b>	5	240	15.5
<b>108</b>	10	305	30
<b>109</b>	15	290	37
<b>110</b>	20	455	47



### OPTIONS

- **RAIL LIFTING JACK** Ref. **106** with Shifting Skid (supplied with Removable Shaft) - Ref. **106-P**
- **SHIFTING SKID** - Ref. **P**



## LEVELLING TELESCOPES

**USE:** Track Levelling Works, (Renovation, Maintenance and Repair Work)

**ADVANTAGES:** Very Accurate and Reliable.

- ▶ **Telescope and Levelling Rod on Stand** (Height above the Rail = 110 cm)  
(The telescope includes a Graduated Levelling Sight with Bubble Level)

Reference	Magnification	Read at ... m	WEIGHT (Kg)	
			Telescope	Levelling Sight
<b>LM24X</b>	24 Times	40	11	3
<b>LM50X</b>	50 Times	80	13	3

- ▶ **Low Telescope** (Height above the Rail = 18 cm)  
(The Telescope includes a Graduated Levelling Sight (5 Graduations) with Bubble Level)

Reference	Magnification	Read at ... m	WEIGHT (Kg)	
			Telescope	Levelling Sight
<b>220</b>	24 Times	40	3	2
<b>235</b>	50 Times	80	3	2.2



Ref : 220



Ref : LM24X

### OPTIONS

- For Low Telescope : Track Lining Rule mounted to the back of the Levelling Sight - Ref. **225**
- **Transport cases** (telescope + levelling sight) : ▷ for Telescope on Stand (wooden) = 17 Kg - Ref. **222**  
▷ For Low Telescope (metal) = 5.3 Kg - Ref. **221**

TRACK LINING AND LEVELLING WORKS

These Specifications are given for your information only and may be technically modified and improved.



## TRACK LINING RATCHET-WHEEL / BILL HANDLES

**USE:** Alignment of the rails and track.  
Switch and crossings jointing.

**ADVANTAGES:** Simple, accurate and durable.

### MC-1 TRACK LINING RATCHET-WHEEL



1 **Device** includes :

- 1 Ratchet-Wheel, 100 m of Nylon Wire retaining Catch and Quick Device for fastening to the Rail Flange.
- 1 Sline Base with Lateral Adjustment of the Nylon Cord and Device for Quick Attachment to the Rail Gauge.
- Total Net Weight : 5.2 Kg

### BILL HANDLES PB-1

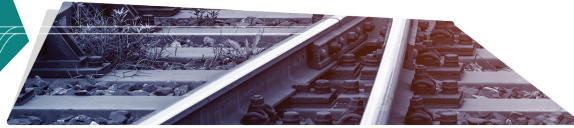


- Steel Body Ø 140 mm with Central Handle
- Hardened Steel Toe-Piece Ø 12 mm
- Rolling Nylon Cord 10/10th x 100 m on Bill Handle Body.
- **PB-1** includes 1 Piece of the 2 Bill Handles.
- Unit Net Weight : 670 gr.

▪ **Delivered of the Set :** (2 x **PB-1**) + 1 **Nylon Cord**, Length 100 m - Total Weight = 1.5 Kg

### OPTIONS

- **Device for Tramway Tracks (Grooved Rails)** - Ref. **MC-2**



## TRACK SHIFTING BARS

**USE:** Track shifting, track lining works switch and crossings jointing.

**ADVANTAGES:** Durable and guaranteed.

- Hard Steel Ø 35 mm
- 1 Hardened Nib at one End
- 1 Ball at the other End
- Paint : Black Varnish
- Body Ø 35 mm - Length 1.65 m - Weight 13 Kg - Ref. **4**
- Body Ø 35 mm - Length 1.80 m - Weight 14.5 Kg :
  - ▷ with Eye (NF. F. 76 006) - Ref. **44**
  - ▷ without Eye..... Ref. **44-S**



### OPTIONS

- **Sleepers Spacing Bars** : See Tech. Spec. No. **7/5**



## SLEEPERS SPACING BARS

**USE:** Spacing Works.

**ADVANTAGES:** Lightweight and Durable.

### French Railways Model

- Ø 30 mm Hard Steel
- Length = 1.50 m
- 1 Ball at one End
- 1 Hardened Nib at the other End
- Weight = 7.3 Kg
- Paint : Black Varnish
- Reference : **42**



Ref. **42**

### Enterprise Model

- Ø 25 mm Hard Steel
- Length = 1.20 m
- 2 Hardened Nibs
- Weight = 4.5 Kg
- Paint : Black Varnish
- Reference : **42-B**



Ref. **42-B**

### OPTIONS

- **Track Shifting Bars** : Tech. Spec. No. **6/5**





## LIGHTWEIGHT GANTRY CRANES FOR RENEWAL OF RAILS

**USE:** Renewal of Rails and Switches and Crossings, (lifting and lining of the Track).  
Loading and unloading Switches and Crossings on Track Motor Car.

**ADVANTAGES:** Highly Safety Equipments - Easy to dismantle and transport.

- Horizontal Beams made from reinforced aluminium alloy.
- Steel Legs with Wheels for carrying on rails and Handles.

Length Horizontal Beam (m)	Lifting Capacity (Kg)	Quantities			Hoist control	Weight gantry crane alone (Kg)	Ref.	Size
		Fixed Leg	Adjustable Leg	Hoist				
1.2	1000	1	1	1	Crank Handle	49	559/1	Small
1.8	1000	1	1	1	Crank Handle	75	560/2	Medium
			2	1	Crank Handle	86	560/23	
3	1600		2	1	Crank Handle	120	560/3	Large
	2000		2	2	Crank Handle with Chain		560/31	
	1600		2	1	with Chain		560/32	
	2000		2	2	with Chain		560/33	
3.5	3200		2	2	with Chain	130	560/34	Super-Large



SNCF AGREEMENTS	
Agreed Models	Nos. Agreements
560/2 and 560/23	<b>DPI - 14205</b>
560/3	<b>DPI - 14204</b>

### OPTIONS

- **The Ref. 560/34** with Pivoting Transport Wheels Device allowing to circulate on Auxiliary Lateral Rails : (Track Center's = 3.30 m)
- **Rail Tong with Rollers for moving the Rail** (see Tech. Spec. No. 43/3 and 44/3)
- **Trestle Gantry Crane** (see Tech. Spec. 24/3, 43/3 and 44/3)



## LIGHTWEIGHT TRESTLE GANTRY CRANE

**USE:** Lifting of the Rail for Various Purposes. Lifting and Lining of the Track.  
To change the rubber plates under the rails, and other works (weldings, ...)

**ADVANTAGES:** Lightweight and Durable Equipment (all-aluminium Construction).

### LIGHTWEIGHT TRESTLE GANTRY CRANE Ref. 560/6

- Reinforced aluminium Body
- Aluminium Legs with Handles
- Lifting Stroke = 55 cm
- Height = 1 m
- Footing = 45 cm
- Lifting Capacity = 1000 Kg
- Chain Hoist with Safety retaining Brake, and Standard Rail Tong
- Weight = 23 Kg (with Full Hoist)



### OPTIONS

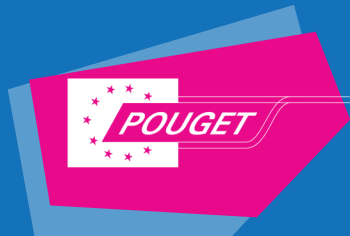
- **LIFTING CAPACITY** 2000 Kg - Ref. **560/7** →
- **Tong for Tramways** (Grooved Rail) - Ref. **662-T**
- **Tong with Rollers** for moving the Rail (Tech. Spec. No. 44/3) - Ref. **61**











8, allée du Val du Moulin - B.P. 69  
93240 STAINS - FRANCE

Tél. : 33. (0) 1.48 26 62 12 / +33 (0) 9 75 90 59 48

Fax : 33. (0) 1.48.22.37.15

E-mail : [pouget.rail@wanadoo.fr](mailto:pouget.rail@wanadoo.fr)

[www.pougetrail.com](http://www.pougetrail.com)



# CATALOGUE

## MACHINES & TOOLS

for Track Construction and Maintenance

SINCE 1935