



RAIL WELDING EQUIPMENTS



■ Mobile Safety Barriers.....	1/6	■ Hydraulic Rail Tightener.....	7/6
■ Welding Rules and Square.....	2/6	■ Chisel (cold / hot).....	8/6
■ Electric Welding Sets.....	3/6	■ Crawler-Conveyor.....	9/6
■ Rail profiling Grinders.....	4/6	■ Portable Impact Wrenches.....	10/6
■ Electric Rail Grinders.....	5/6	■ Abrasive Rail Cutting Machine.....	11/6
■ Manual Lightweight Platform Trolleys.....	6/6		



MOBILE SAFETY BARRIERS BMS (Patented)

USE: Physical Protection for Operating Agents on Tracks.

ADVANTAGES: Lightweight, Effective and very easy to install and transport.

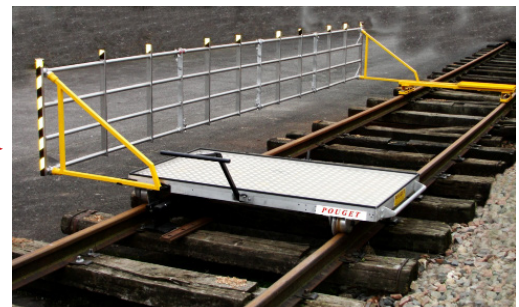
- These Barriers are equipped with Safety Devices enabling trains to travel at High Speed on the neighbouring Track without any Risk for the Operating Agents.
- Possibility of working without Risk of tipping.

1 **Mobile Safety Barrier** equipped with :

- 1 Handle Platform (30 Kg)
- 1 Platform Trolley with Automatic Brake Ref. **PL1S-PC** «**SNCF**» **Agreed** (Weight 59 Kg)
- Easily Dismountable Lateral Barriers (in Panel of 3 m.)
- Each Panel (3 m.) is folded in **2 parts of 1.50 m.** , Can be Transported in Truck (**Weight 19 Kg**)

Space of free evolution on the Track inside the Mobile Barrier

(m)	In all AS LUMINIUM STRUCTURE	TYPE
3		BMS-1
6		BMS-2
9		BMS-3



Transport Platform Trolley Ref. **PL1S-PC**,
with Adjustable Control Lever in Length

Load Capacity : 500 Kg

See the Details on the Technical Specification No. **4/4**



OPTION

- Safety Barrier with Device fixed on rail - Ref. **BMR** , equipped with aluminium panel (3 m.)



WELDING RULES AND SQUARE

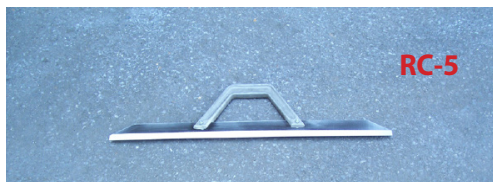
USE: Check the Rail Squaring before welding.

ADVANTAGES: Gauge to allow the square to fit in the gap between the 2 rails to be welded..

BEVELLED RULES

Body in Bevelled Stainless Steel with Handle.
Accuracy = 1/10th mm

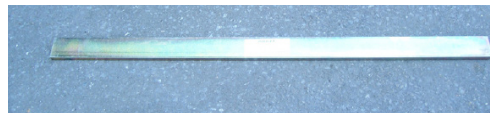
Ref.	Length (m)	Weight (Kg)
RC-5	0.5	1.5
RC-10	1	3
RC-15	1.5	4.5



RP-10 FLAT RULES (Steel)

For Rail Adjustment before welding
Rectangular Section : 50 x 12 mm - Length 1 m
Weight = 4.7 Kg

with chromatic protection.

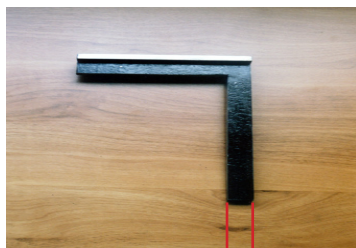


RP-10

WELDER SQUARE ES-1

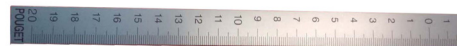
(For aluminothermic weldings)
To check the Interval between rails
Hard Steel (Inox)
Length : on the rail head 120 mm
into the interval 180 mm

Width : 17 mm
Weight : 0.5 Kg



WELDER SHORT RULER WSR-20

To control the space before welding
Width 18 mm / Thickness 0.5 mm
Stainless steel
2 scales : 0-20 / 0-200 mm



OPTIONS

- **Protective Sleeves for RC-10 Rule** - Ref. **FPR-10**
- **Protective Sleeves for RC-15 Bevelled Rule** - Ref. **FPR-15**



ELECTRICAL WELDING SETS - GS

USE: Works on the Tracks.
(Re-surfacing of rails, Switched and Crossings, Various Repair Works ...)

ADVANTAGES: Professional, Strong and Economical Equipment.

Portable Lightweight Welding Sets, complete with Safety Devices, is equipped with :

- 1 Overcurrent Disconnector 30 mA
- Direct current welding

In position of Generating Set, it produces 400 V Triphase Current , and 230 V Single Phase.
Mounted on 2 Rubber Wheels for easy transportation, with Handles.
(not represented on the photo below)

Fuel	Power (HP)	Intensity Maxi (A)	The Set POWER		Ø MAXI of Electrode (mm)	Weight of the Set (Kg)	References
			400 V Triphase (kW)	230 V single Phase (kW)			
Petrol	14	220	7.2	3.2	5	98	GS.10
Diesel	9.4	220	4.7	3.5	4	120	GS.12



OPTION

- ▷ Welding Kit with Cable 35 mm² - Ref. **KS**
- ▷ Interdifferential Safety Protection Kit for the users - Ref. **KI** , comprenant :
 - 1 Interdifferential 30 mA
 - 1 Earth Rod
 - 1 Case
- ▷ **Generating Sets - See Tech. Spec. Nos. 24/1**



RAIL PROFILING GRINDERS (N-1 / N-12)

USE: Grinding after Alumino-thermic welding of rails.

ADVANTAGES: Grinding after Reprofileing of rails or Switches and Crossings.

N-1 PROFILE RAIL GRINDER

- Portable, to grind the rail 100 RE-90 R - UIC-54 after aluminothermic welding
- With BERNARD Petrol Engine 7 HP - 4-stroke
- Inclination possible from the horizontal to vertical position
- Total swiveling range of the grinding unit is more than 180°
- Grinding Wheel Ø 150 mm x 75 mm - Ref. 1039-B
- Special Frame Construction with full view of the grinding Surface Light Weight System consisting of combined support and guide rollers to hold the machine against the rail when grinding in horizontal position
- Rotating Speed of the Wheel : 4 000 rpm
- Centre-to-centre Guide Runners : 1 m.
- Grinding Accurate : ± 0.1 mm
- Weight = 68 Kg



N-12 PROFILE RAIL GRINDER, with Flexible

- With Flexi-Horse, length 3.5 m equipped with :
 - ▷ Ø 150 mm Cup Wheel (option : 125 mm)
 - ▷ or Ø 150 or 200 mm Flat Wheel

This Machine is equipped with :

- 1 Petrol Engine 7HP (4 stroke or 2 stroke)
- 1 Flexi-Horse, length 3.50 m with Ø 150 mm Flat Wheel
- 1 Quick-Assembly Union between the Flexi-Horse and the Rail Grinding Machine.
- Weights : Machine 58 Kg / Flexi-Horse 15 Kg



OPTION

with Electric Motor 4 kW - Ref. **N12-E** - Weight : 57 Kg



ELECTRIC RAIL GRINDERS (230 V - 50 Hz)

USE: Finishing Grinding after Welding and Re-loading of rails Switches and Crossings. (It is forbidden to use these Grinders with the rain)

ADVANTAGES: Reliable, Strong and Silent.

NP-5 PORTABLE RAIL GRINDER MACHINE

- 2500 W - 230 V - 50 Hz
- Ø 115 mm Cup Grinding Wheel (Ref. 1039-K)
- Weight = 6 Kg

MAIN USE

- Finishing Grinding after Aluminothermic Welding.



NP-17 LIGHTWEIGHT PORTABLE RAIL GRINDER

- 2600 W - 230 V - 50 Hz
- Ø 115 mm Cup Grinding Wheel (Ref. 1039-K)
- Centre-to-centre Guide Runners : 750 mm (all Other Dimensions on request)
- Weight = 35 Kg

MAIN USE : For rail levelling (Rail Corrugation) and connecting at Switches and crossings after re-loading.



MPE-10 LIGHTWEIGHT PORTABLE RAIL GRINDER

- 1300 W - 230 V - 50Hz
- Ø 72 mm Cup Grinding Wheel (Ref. 1039-D)
- Weight = 2.3 Kg

MAIN USE : for Rail Grinding Finition and for Joints and Welding Rectification, as well as Switches and Crossings.



OPTIONS

- **Grinding Wheels** - Tech. Spec. NO. **2/2**
- **Portable Generating Sets** - Tech. Spec NO. **24/1**
- **Welding Rules** - Tech. Spec. NO. **2/6**
- **Thermic Rail Grinders** - Tech. Spec. NO. **5/1**

Nota : Do not use these Rail Grinders with the rain for your SECURITY



MANUAL LIGHTWEIGHT PLATFORM TROLLEYS - NEW GENERATION

USE : Transport of all equipment and materials on the track over short distances.
Max load : 500 Kg to 2 tons.

ADVANTAGES : Guaranteed, lightweight (aluminium) and tough equipment that offers total safety of use.

All our platform Trolleys are equipped with **BRAKING DEVICES** and the 4 wheels are electrically insulated.

They are designed with 2 side handles for manipulation by the Operating Agents.

Standard dimensions (for 1.44 m track) : **175 x 75 cm** / (for Metric Gauge) : 132 x 75 cm

The Brake Lever can be positioned on the two sides and is dismantable.

REFERENCES		Load Capacity (Kg)	Parking Brake on 2 Wheels	AUTOMATIC BRAKE		Weight (Kg)
				on 2 Wheels	on 4 Wheels	
PL1T		500	x			48
PL2T		1000	x			52
PL5S		2000		x		63
«SNCF» AGREED						
STANDARD	LGV Ref. (*)					
PL1S	PL1S-LGV	500		x		53
PL2S	PL2S-LGV	1000		x		57
PL3S	PL3S-LGV	500			x	55
PL4S	PL4S-LGV	1000			x	59

(*) **LGV Models**, New Generation are authorized to circulate on High Speed Lines and on Standard Tracks. Height of the Floor at the Running Surface of the rail = 280 mm

Double lightweight platform Ref. PL5S-GR Trolley with automatic brakes and Lateral wheels
Load capacity : 2000 Kg
Dimensions = 200 x 175 cm

OPTION

- **MOTORIZED PLATFORM** - See Sheet No. 5/4
- **LARGE-WIDTH PLATFORM TROLLEY** - Ref. **GL**
- **SIDE ROLLERS** - Ref. **GR**
- **ODOMETER** with Trolley - Tech. Spec. No. 6/7

Manual Super-Lightweight Platform Trolley - Ref. **PL6S**
Load Capacity : 500 Kg
Dimensions = 175 x 50 cm
Weight : **25 Kg**



coupled with Odometer

Braking with Linkage





HYDRAULIC RAIL TIGHTENERS - TR-70

USE: Adjusting the gap between 2 Rails before welding Tighteners to free continuous Lengths of Rails.

ADVANTAGES: Very Tough Equipment designed to ensure that trains can move freely, without engaging the Track Gauge.

- Tensile force = **700 KN**
- Longitudinal Stroke of Hydraulic Jacks = 350 mm
- Operating Pressure = 600 Bars
- Automatically operated Jaws suitable for all Rail Section up to 60 Kg/m.
- Tie Rods of various lengths (to specify) ranging from 0.50 m to 2 m. (Standard Length = 1.80 m)
- Overall Width : 750 mm (excl. tie rods)
- Total Weight approx. = 270 Kg
- Operates using a Manual Pump or Hydraulic Unit.



1 **Standard Rail Tightener** ref. **TR-70** is equipped :

- 2 Tightening Sets by a Jaw
- 2 Hydraulic Jacks - Force 75 tons
- 2 Tighteners, Length 1.80 m
- 1 Manual Hydraulic Pump

OPTIONS

- **Welding Square** - Tech. Spec. No. 2/6



CHISELS (COLD / HOT)

USE : - Cutting all Parts, bolts, etc. (Cold Chisel)
- Cutting the Edges of Incandescent Welds (Hot Chisel).

ADVANTAGES : High Quality and Tough Equipment.

COLD CHISEL

- Cutting Width = 40 mm
- Octogonal Heel
- Sharpening Angle 70°
- Length = 200 mm
- Oval Eye = 36 x 25 mm
- Weight = 1.8 Kg
- Reference : **16**



HOT CHISEL

- Cutting Width = 40 mm
- Octogonal Heel
- Sharpening Angle 45°
- Length = 200 mm
- Oval Eye = 36 x 25 mm
- Weight = 1.8 Kg
- Reference : **161**



OPTIONS

- **HANDLES (ash)** - Ref. **126** (Sheet No. 22/3)
- **Handle Chisel** - Ash Handle - Add **EF** (Ex : 16-EF, or 161-EF)



CRAWLER-CONVEYOR

USE: To transport Tools and Equipments on Track.
(Welding Equipments etc.)

ADVANTAGES: The Crawlers-Conveyors enable the Trolley to cross on top of the Rails without any difficulty.

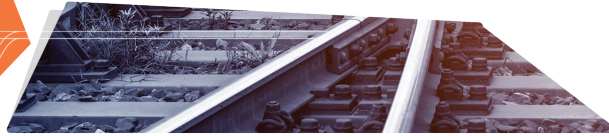
Load max. (Kg)	Engine Power KW	Speed Km/h	Dimensions Platform (cm)	Weight (Kg)	Transmission	Ref.
500	4	AV = 4.3 AR = 3	120 x 90	197	Hydrostatical Bucket Steel	HP-500

- ▷ *HONDA 4-stroke Petrol Engines*
- ▷ *Rubber Crawler Tracks*
- ▷ *Clutch Brake*
- ▷ *«Dead-Man's» Control Device*
- ▷ *Dump bucket*



OPTIONS

- **Snow Clearing Kit** (Weight 60 Kg for HP450-500) - Ref. **CN-10**
- **Crawler disengaging Gear** - Ref. **DBC**
- **Lights for Night Works** - Ref. **EHP**



PORTABLE IMPACT WRENCHES

PORTABLE IMPACT WRENCH S1-P

- With reverser of direction
- 2-stroke **Petrol Engine** - 1,7 kW
- Max. Torque = 100 da.Nm (Adjustable at 0 to 100 da.Nm)
- Dimensions :
 - Length : 760 mm
 - Height : 350 mm
 - Width : 390 mm

Standard Drive Square : 25.4 mm - **Option** : 23 mm

- Net Weight : 19 Kg

OPTIONS

- Low-Vibration Device - Weight = 1 Kg
- Reinforced Socket for Impact Wrench treated in Special Nickel Chrome Vanadium Steel - Tech Spec. NO. 3-2/2
- **Other ACCESSORIES** - Tech. Spec. 8-1/2 and 8-2/2



PORTABLE IMPACT WRENCH S4-P

POUGET's Innovation



This Portable Machine allows to work on track through the use of **S1P Impact Wrench** and can be easily taken from the Track by one Operating Agent.

WEIGHT OF THE COMPLETE MACHINE : **35 Kg**

TECHNICAL CHARACTERISTICS

- **S1P** Impact Wrench, with a 2-stroke Petrol Engine
Power 1.7 kW - Max Torque : 100 da.Nm, Adjustable.
with reverser direction of the rotation - Square Drive 25.4 mm
(Sockets - available in all dimensions) - See the Tech. Spec. No. **3-2/2**
- **All aluminium Trolley Support**, with Pivoting Reinforced Pneumatic Shock Absorber.
Dismantable Aluminium Bar-Trolley with insulated Nylon Roller - Weight : 14 Kg

OPTION : PORTABLE ON BATTERY 18 V Coachscrewing Machine with Trolley S5P (Details on Sheet 11/1)
Weight 35 Kg

OPTIONS

PORTABLE **ELECTRIC** IMPACT WRENCHES 220 V / 50 Hz (It is forbidden to use them in the rain)

- Max. Torque 60/dN.m - Weight 8 Kg - Ref. **TBE-20**
- Max. Torque 100/dN.m - Weight 10 Kg - Ref. **TBE-30**



ABRASIVE RAIL CUTTING MACHINE **TR4-14**

An Ultra -powerful Machine for quick and accurate cut of rails.

TECHNICAL CHARACTERISTICS

- 2-stroke Petrol Engine - 119 cm³ - **POWER 5.8 kW**
- Steel Clamp with Spring for rails upto UIC-60
- Possibility to reverse the Engine to finish the cut
- Automatic earthing (Safety)
- Chrome-Steel Guard, Heatproof
- Air-double filtration, with decompressor
- Double-reinforced abrasive Disk Ø 350 x 4 x 25,4 mm - Ref. **6098**
- Weights : Motor 17 Kg / Vice 5 Kg
- Reference : **TR4-14**
- On request : Abrasive Disk Ø 400 mm (Machine Ref. **TR4-16**)

For Abrasive Disk Ø 14"

- Sound Level : 102 dB(A)
- Delivered in Transport wooden Case



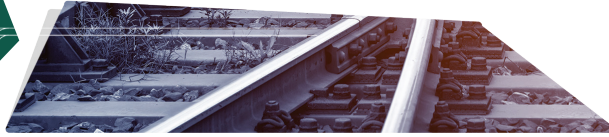
OPTION

- **Rail Cutting Machine with Ø 400 mm Disk** - Ref. **TR4-16**
- Abrasive Disk Ø 350 mm - Ref. **6098**
- Abrasive Disk Ø 400 mm - Ref. **6101**
- Protective Gaiters - Ref. **GP-4**
- Protective Goggles - Ref. **LPR**



NOTES

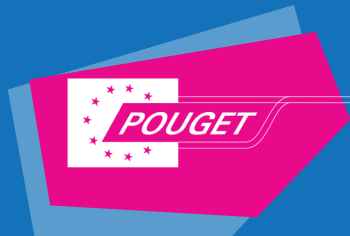
Lined area for notes



NOTES



NOTES



8, allée du Val du Moulin - B.P. 69
93240 STAINS - FRANCE

Tél. : 33. (0) 1.48 26 62 12 / +33 (0) 9 75 90 59 48

Fax : 33. (0) 1.48.22.37.15

E-mail : pouget.rail@wanadoo.fr

www.pougetrail.com



CATALOGUE

MACHINES & TOOLS

for Track Construction and Maintenance

SINCE 1935