

HYGIENE, SAFETY PROTECTION AND SIGNALLING



■ Electro-Pneumatic Warning Signal.....	4/9	■ Signal Lamps and Draughtboard.....	8/9
■ Other Warning Signals.....	2/9	■ Security Detonator - Red Flare.....	9/9
■ Mobile Safety Barriers.....	3/9	■ Track Security Set.....	10/9
■ Switch Rail Key Lock.....	4/9	■ Mobile Track Vacuum Exhauster.....	11/9
■ Safety Helmets.....	5/9	■ Shunt Bar.....	12/9
■ Protection Goggles.....	5/9	■ Shunt Cable.....	12/9
■ Protective Gaiters.....	5/9	■ Linking Cable.....	12/9
■ Safety Jackets.....	6/9	■ Socket on rail.....	12/9
■ Signal Flags.....	7/9		



SLJ-9[®] ELECTRO-PNEUMATIC WARNING (Registered)

USE: Protection of the Workers on Track (Day and Night).

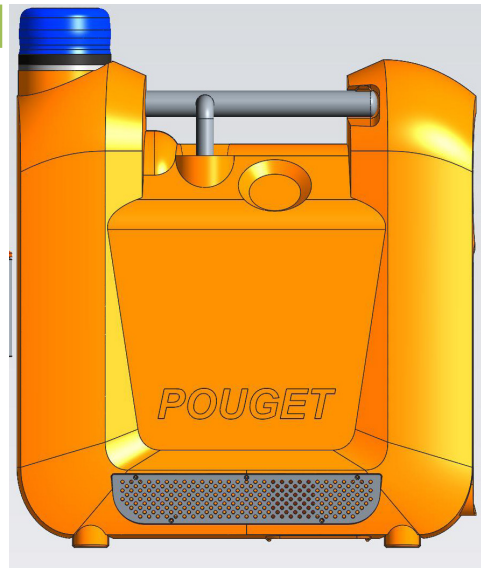
ADVANTAGES: Very Light Equipment, Efficiency and Easy to operate with an Automatic Incorporated Recharging Device.

MAIN TECHNICAL CHARACTERISTICS

1st ELECTRO-PNEUMATIC WARNING SIGNAL (Patented)

- Hand and Remote Controls
- With Manual-Emergency Pump

ACOUSTIC POWER : 120 dB (A)
FREQUENCY : 388 Hz
OPERATING PRESSURE : 5/8 Bars
With 2 Batteries 12 V (rechargeable 230 V)
DIMENSIONS : 43 x 15 x 45 cm
TOTAL WEIGHT : 9 Kg



A MODERN WARNING
... FOR YOUR SECURITY

OPTION: Safety Hearing Helmets for the Operating Agent - Ref. **CAB-1 / CAB-2**



WARNING SIGNALS

USE: Compulsory Protection for Workers on Tracks. It provides Warning of the Arrival of a Train on near by Track, travelling at Normal Speed.

ADVANTAGES: Highly Safe Equipment and Efficiency Equipment.
(**COMPULSORY** for all Track Works)

1 tone MANUAL WARNING SIGNAL - Ref. 1034-1

- ACOUSTIC POWER = 110 dB at 5 m.
- Frequency = 388 Hz
- Operating Pressure = 3 to 8 Bars
- Tank Capacity = 8 l.

The Complete Device includes :

- 1 Hand Pump
- 1 Air Tank with Pressure Gauge
- 1 Call Button
- 1 Wheel for transporting along the Track
- Weight 16 Kg
- Paint in yellow varnish



2 tones MANUAL WARNING SIGNAL - Ref. 1034-2

OPTION : SAFETY HEARING HELMETS for the Operating Agent - Ref. CAB-1 and CAB-2

SLJ-9 ELECTRO-PNEUMATIC WARNING SIGNAL - (Sheet No. 1/9)

Lightweight Warning Signal Type T

With Direct Operating Lever
Acoustic Power 118 dB at 5 m.
Paint Yellow Varnish
Weight 7 Kg



WARNING SIGNAL

with Gaz - Ref. AVP
113 dB at 3 m
110 dB at 5 m
Weight 0.5 Kg



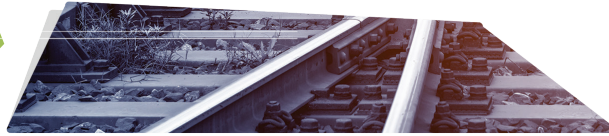
Horn (Body in Brass)

Type «SNCF» - Length 35 cm
Weight 0.26 Kg - Ref. 1038
(This Device is Part of
Set of Security SEC-1 -Sheet No. 10/9)

SPARE PARTS

Tip of the Horn
Ref. 1038-E





MOBILE SAFETY BARRIERS BMS (Patented)

USE: Physical Protection for Operating Agents on Tracks.

ADVANTAGES: Lightweight, Effective and very easy to install and transport.

- These Barriers are equipped with Safety Devices enabling trains to travel at High Speed on the neighbouring Track without any Risk for the Operating Agents.
- Possibility of working without Risk of tipping.

1 **Mobile Safety Barrier** equipped with :

- 1 Handle Platform (30 Kg)
- 1 Platform Trolley with Automatic Brake Ref. **PL1S-PC** «**SNCF**» **Agreed** (Weight 59 Kg)
- Easily Dismountable Lateral Barriers (in Panel of 3 m.)
- Each Panel (3 m.) is folded in **2 parts of 1.50 m.**, Can be Transported in Truck (**Weight 19 Kg**)

Space of free evolution on the Track inside the Mobile Barrier

(m)	In all ALUMINIUM STRUCTURE	TYPE
3		BMS-1
6		BMS-2
9		BMS-3



Transport Platform Trolley Ref. **PL1S-PC**,
with Adjustable Control Lever in Length

Load Capacity : 500 Kg

See the Details on the Technical Specification No. **4/4**



OPTION

- Safety Barrier with Device fixed on rail - Ref. **BMR**, equipped with aluminium panel (3 m.)

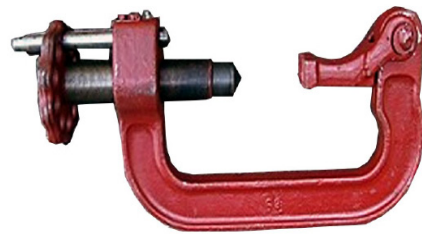


SWITCH RAIL KEY LOCK

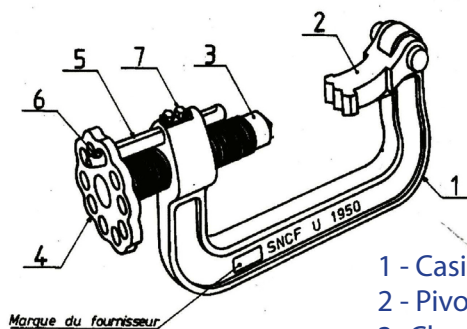
USE: Locking Switch and Crossings

ADVANTAGES: Highly Safe Equipment in forged steel (does not engage the track gauge).

- Model French Railways « **SNCF** »
- Screw stroke : 100 mm
- 10 locking positions
- The screw is made from hardened steel with a 120° pointed end (Small Thread)
- Pivoting Rear Shoe
- Paint : brown varnish
- Overall Length : 40 x 20 x 10 cm
- Weight : 5.7 Kg
- Reference : **271**

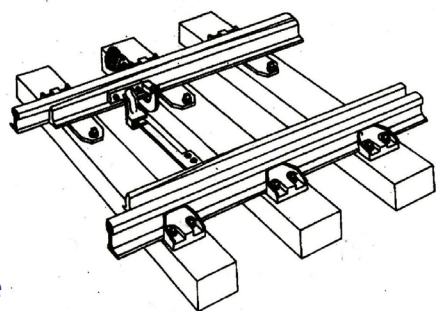


Type 1950 Switch Rail Key Lock
(Claw 2 in Normal Setting Position)



Marque du fournisseur

Setting on turnout
(Fixed of the left tong)



- 1 - Casing
- 2 - Pivoting shoe
- 3 - Clamping Screw
- 4 - Clamping Hand Wheel
- 5 - Locking Rod
- 6 - Hole for Pad Lock
- 7 - Guidage screw of the rod rep. 5

OPTION

- Trapezoïdal Threaded Screw (minimum quantity = 20 p.) - Ref. **271-FT**



SAFETY HELMETS, PROTECTION GOGGLES, PROTECTIVE GAITERS

USE: Their Use is compulsory for Grinding and Cutting Rails Works.

SAFETY HELMETS

With Rod-up Visor - Ref. **CPV**
(Adjustable 51 to 62 cm)
Colours available : White, Yellow, Blue, Red.
Weight : 0.58 Kg

Without Visor (51 to 62 cm) - Ref. **CP**
Colours available : White, Yellow, Blue, Red.
Weight : 0.4 Kg



EAR PROTECTORS - Ref. **CAB-1**
Electrically insulated , with Adjustable Arch.
Highly Protection
Allows to pass the Frequency Voices and Important Signals.

Noise Reduction : **33 dB**



EAR PROTECTORS - Ref. **CAB-2**
To clamp on Safety Helmet Ref. **CP** ,
can be pivoted on back in case of offservice.
Waterproof, without inconvenience on the Ears
Supplied with two Adapters suitable for all the Standard Helmets.

Noise Reduction : **28 dB**

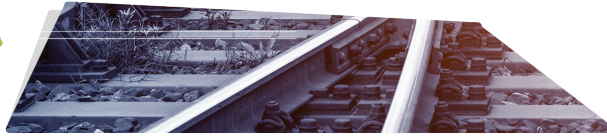


PROTECTIVE GAITERS
All Leather - Ref. **GP-4**
with Laces and Buckle
Weight of Pair of Gaiters : 0.7 Kg



PROTECTIVE GOGGLES
Unbreakable - Ref. **LPR**
with Elastic Strap to clamp





SAFETY BELTS AND JACKETS

USE: COMPULSORY for all Operating Agents moving along the Track.

SAFETY JACKET IN ORANGE PHORESCENT NYLON

Type «SNCF» Ref. **PMM**

Sleeveless

With 2 Reflective Stripes

Height = 70 cm

Developed Width = 130 cm

Weight : 0.14 Kg



WHITE SAFETY JACKET

in Cotton Cloth - Ref. **WJ**

Sleeveless

Medium Size

Height = 70 cm

Weight = 0.2 Kg

(For Safety Agent on Track)



WHITE-SAFETY JACKET with YELLOW-BLACK PHOSPHORESCENT STRIPES

Ref. **VPBP**

Sleeveless

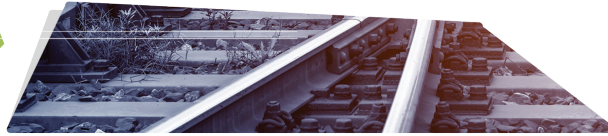
Height = 70 cm

Medium Size Developed Width = 130 cm

Weight : 0.2 Kg

(for day and night Works)





SIGNAL FLAGS

USE: Signaling at Work Sites

ADVANTAGES: Tough and Durable.

RECTANGULAR FLAG - Ref. **DRP**

Dimensions : 500 x 650 mm in synthetic Material
With Wooden Handle, length 0.70 at 1.20 m
Colour available : Red, Green, Yellow and White
Weight = 0.5 Kg

with Conical Metallic Tip - Ref. **DRPM**

Part of **SEC-1** Set of Track Security (Sheet No. **10/9**)



TRIANGULAR FLAG - Ref. **DRPT**

With Wooden Handle, length 1 m
Red Synthetic Material
Width of the Base 0.6 m.
Weight = 0.40 Kg



FLAG WITH SUPPORT fixed on rail

Ref. **SDRP**

Weight = 1.5 Kg



LIGHTING BLUE STICK - Ref. **BEB**

Total Length : 54 cm
Permanent or Flashing Lighting
Weight : 0.4 Kg - (supplied without Battery)
Provided for 2 Batteries 1.5 V



OPTIONS

- **Conical Metallic Tip** allows to place the Flag into the Ballast.

- ▷ for **Rectangular Flag** - Ref. **DRPM**
- ▷ for **Triangular Flag** - Ref. **DRPTM**

- **FLAG-HOLDER** with Shoulder Strap (all-leather)- Réf. **PRP**
- **ROLLING KNAPSACK** (See Sheet 49/3)





SIGNAL LAMPS AND DRAUGHTBOARD

USE: Signals during the Works on Track.

ADVANTAGES: Strong Materials, and very Safe.

Electric 220 V, Rechargeable Light - ref. **L2F**

- Unbreakable Plastic Case
- Incorporated Battery Loader
- 1 On/Off Button
- 1 Single / Double Intensity Button
- Screen 4 colours (Red-White-Green-Orange)
- Sizes = 26 x 12 x 17 cm
- Weight = 2.1 Kg



(Part of **SEC-1 Set of Track Security Sheet No. 10/9**)

Electric Light (with Rechargeable Battery) - ref. **L5F**

- 1 Rotatory Commutator
- 3 Lights : red - white - Green with Reflector
- with Battery 3.75 V Ni - Cd
- Weight = 2.7 Kg

OPTION : Charger of Battery - Ref. **CHL5F**
Battery - Ref. **BAL5F**



TAIL LAMP

- On front : 1 White Light + 1 Red White
- Width a Switch for each Light
- Supplied with one Battery 6LR20
- Unbreakable Plastic Casewith Handle and UIC-Hook, on Rear-Side
- Ref. **L2F-B**



Metallic Signal Draughtboards

White-Red - Ref. **DBR**
White-Blue - Réf. **DBB**
Weight : 2.5 Kg

With Support fixed on rail :
Ref. **SDBR** for the White/Red
Ref. **SDBB** for the White/Blue



L7F RED Lamp for Railways Works

- Double face dia. 180 mm
- Supply with 2 Batteries 6V
- Diodes high efficiency
- Lighting-Head orientable on 360° (fixing or blinking) with a rear-hook.
- Dimensions : 36 x 18 x 8 cm
- Net Weight with batteries : 1.8 Kg



Spare Parts : Battery 6V - Ref. **BL7F**

Hygiene, Safety Protection and Signalling

These Specifications are given for your information only and may be technically modified and improved.



SECURITY DETONATOR AND RED FLARE

SECURITY DETONATOR - Ref. 1036

Ø Detonator = 52 mm
Crimped Brass Cap
Explosive Powder 10 gr.
with 2 Clips to the Rail
Net Weight = 60 gr.



Supply in wooden cases of 25 pcs (Weight 2.85 Kg)

OPTION : Wooden Case with locking containing 6 Detonators - Ref. **C-1036**
500 x 90 x 65 mm - Weight 1.68 Kg

USE : Protects Work-Site from Travel on it.

*These Devices are parts of **SEC-1**
Set of Track Security (Sheet No. 10/9)*

RED FLARE (8 min.) - Ref. 1037

Ø 48 mm Flare
Length 550 mm
RED Lighting Time 8 minutes
Net Weight = 1.14 Kg



USE : Warning Flare in Case of serious Accident or Incident on the Track.
Use by Date = Given on each Flare
The Device has a hard, Waterproof Plastic Sleeve.

NOTA IMPORTANT :

- **TRANSPORT** : These are Explosives and therefore may only be transported subject to very strict conditions. You will need special insurance.
- **PACKING** : Wooden Case
- **CONSERVATION** : Keep in cool dry Place

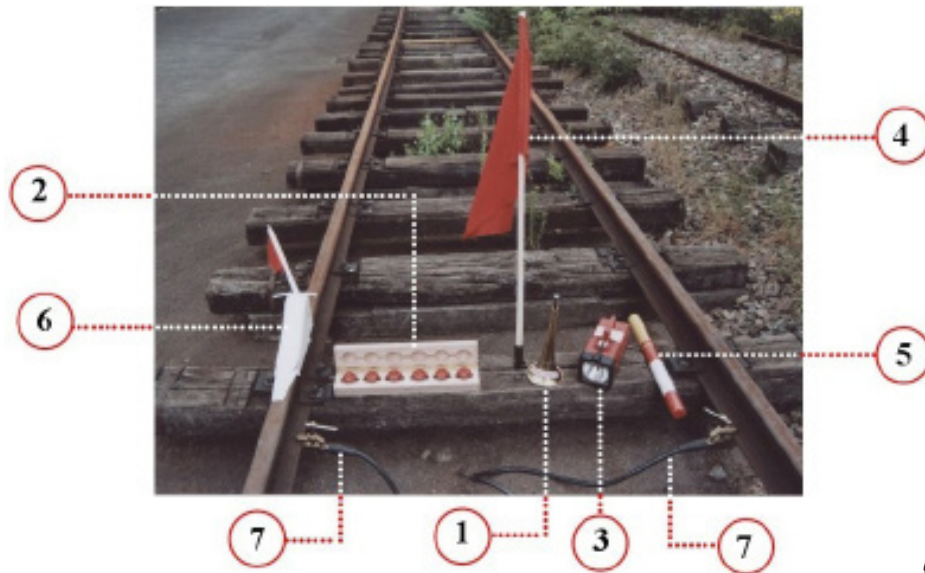


SEC-1 TRACK SECURITY SET

This Set of Security **SEC-1** is compulsory for all tracted Materials circulating on Track and for all Works on Track.

It comprises :

Rep.	Désignations	Spec. No.	Reference	Weight Kg
1	1 Horn , length 350 mm	2/9	1038	0.26
2	1 Wooden Case with 6 Security Detonators . Dimensions : 500 x 90 x 65 mm	9/9	C-1036	1.68
3	1 Signal Lamp 3 Lights rechargeable 220 V Dimensions : 26 x 12 x 17 cm	7/8	L2F	2.1
4	1 Red Flag , Length 1 m. with Conical metal Tip	7/9	DRPM	0.65
5	1 Red Flare 8 minutes Ø 50 mm x length 540 mm	9/9	1037	1.14
6	1 Safety Movable Brake with Red Flag Length of the Block : 42 cm Total Length with the Flag : 91 cm The Flag may be standing perpendicular to the Track.	41/3	11MA	3.2
7	1 Shunt-Cable of the Rails , Length 2 m. (electrically insulated), with 2 Tightening Rail-Clips. Maxi amperage : 270 A	12/9	CS-1	3



OPTION :

ROLLING KNAPSACK for Transport of the Track Security Set and hand Tools
Dimensions : 55 x 38 x 25 cm
Weight = 4 Kg
Ref. **SDR**





AM-2 MOBILE TRACK VACUUM EXHAUSTER

USE: Vacuum and recover (into plastic dustbin) all waste ...
(Bottles, rags, cigarettes butts, etc...) on Tracks, Stations, etc...

ADVANTAGES: Simple, Effective and very economical Device for Track Cleaning in Stations.

The **AM-2** Mobile Track Vacuum Exhauster includes :

- 1 Depression Vacuum driven by a Petrol Engine HONDA 11 HP, with a Turbine Ø 400 mm mounted on a steel frame (can be easily dismantled)
- 1 Container on wheels (Capacity 360 l.)
- 1 Vacuum Hose Ø 200 mm (Standard Length)
- 1 Platform Trolley Ref. PL1S, with Automatic «dead-man» brake (Sheet No. 4/4) for transport on track.
- Dimensions (for Standard Track Gauge) = 175 x 75 cm
- Standard Length of Vacuum Hose = 5 meters
- Weight = 130 Kg



NOTA IMPORTANT :

- The Vacuum Extraction of Sand is possible, if it's not damp.



SHUNT-CABLE AND LINKING CABLES

USE: Shunt of two Rails during the Track Works, and of Signalling.

ADVANTAGES: Total Security Materials.

SHUNT-BAR - Ref. **BS-1**

«SNCF» Model, with two Hardened-Steel Nibs
A Strong Spring on a Hard Pression on the two Nibs.
Aluminium Body, with Handle
Length closed = 1.48 m.
Length in Track 1.55 m.
(for Standard Gauge = 1 435 mm)
Weight = 3.2 Kg

OPTION: Transport Wooden Case - ref. **CBS-1**



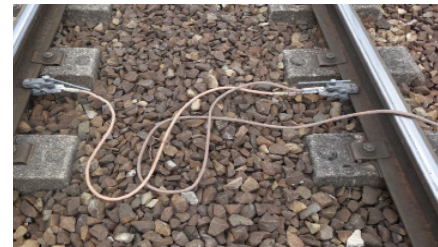
in Track Position



In Closed Position

SHUNT-CABLE - Ref. **CS-1**

Cable Length 2 m.
Electrically insulated
with 2 Clips on Rails
MAXI Amperage 270 A
Weight : 3 Kg



Part of Set of Track Security - ref. **SEC-1**

LINKING CABLE - Ref. **CCE**

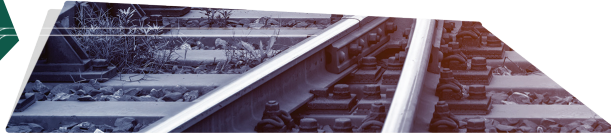
Length. 2 m / 270 A
for electrical continuity of rails with 2 bronze Clamp
Brakets screwed on flange of rail



SOCKET ON RAIL - Ref. **PMR**

Intensity 600 A
Clamping on Flange of rail.





NOTES



NOTES



NOTES



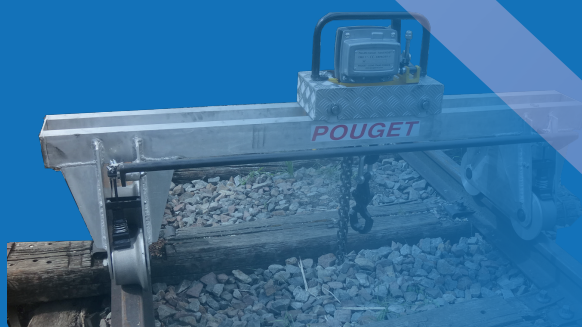
8, allée du Val du Moulin - B.P. 69
93240 STAINS - FRANCE

Tél. : 33. (0) 1.48 26 62 12 / +33 (0) 9 75 90 59 48

Fax : 33. (0) 1.48.22.37.15

E-mail : pouget.rail@wanadoo.fr

www.pougetrail.com



CATALOGUE

MACHINES & TOOLS

for Track Construction and Maintenance

SINCE 1935