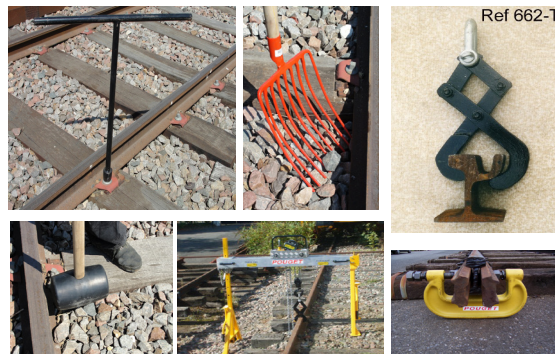




HAND TOOLS



■ Rail Pulling Devices.....	1/3	■ Track Shifting Crowbars.....	28/3
■ Gauge Retaining Bar.....	1/3	■ Crowbars.....	29/3
■ Flat brushes, Magnetic Bar, Indelebile Chalks.....	2/3	■ Spacing Bars.....	30/3
■ Portable Rail-Pulling / Pivoting Device.....	3/3	■ Picks.....	31/3
■ Switch Rail Key Lock.....	4/3	■ Manual Lightweight Platform Trolleys.....	32/3
■ Ball Probes.....	5/3	■ Lightweight Gantry Cranes for renewal of rails.....	33/3
■ Clamps of Fishplates.....	6/3	■ Lightweight Trestle Gantry Crane.....	34/3
■ Cutting Blowpipe.....	7/3	■ Switch and Crossings Rollers.....	35/3
■ Ballast Ploughs.....	8/3	■ Re-Railing Ramps.....	36/3
■ Sleepers Adzing Tools, «Catalan» Chisel.....	9/3	■ Mechanical Screw Lifting Jacks.....	37/3
■ Ratchet Wrenches.....	10/3	■ Rail Rollers.....	38/3
■ Hand T-Wrenches.....	11/3	■ Handsaws.....	39/3
■ Flat and Pipe Wrenches.....	12/3	■ Pad Scrapers and Pallets.....	40/3
■ Polygonal Ratchet Wrenches (Smaller Size).....	12/3	■ Safety Movable Brake.....	41/3
■ Track Laying Squares.....	13/3	■ Hand Drills Augers.....	42/3
■ Ballast Fork.....	14/3	■ Rail Tongs.....	43/3
■ Brake Shoes.....	15/3	■ Special Rail-Tongs.....	44/3
■ Sleepers Hooping Devices.....	16/3	■ Sleper Tongs.....	45/3
■ Automatic Rail Lubricating Devices.....	17/3	■ Drill Bit Brace.....	46/3
■ Lever for Laying Rail Anchors.....	18/3	■ SEC-1 Track Security Set.....	47/3
■ Chair-Driver.....	18/3	■ FASTCLIP Manual Levers.....	48/3
■ Lever for Laying Rolls.....	19/3	■ PANDROL Manual Levers.....	49/3
■ Rubber-Shoe under rails.....	19/3	■ Flexible Stairs for Track Bench and Embankment.....	50/3
■ Wagon Pinch Bars.....	20/3	■ Handles Panel Holder.....	51/3
■ Files, Machete and Pruing Hook.....	21/3	■ Rammer for Coachscrews.....	52/3
■ Handles.....	22/3	■ Extraction of Broken Coachscrews an Bolts Set.....	53/3
■ Sledgehammers and Hammers.....	23/3		
■ Rail Lifting Hoist.....	24/3		
■ Shovels.....	25/3		
■ Rod Crowbars.....	26/3		
■ Rail Quarter Crowbars.....	27/3		



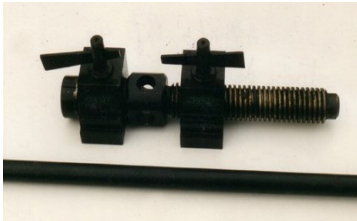
RAIL PULLING DEVICES

USE: Setting the joint: clearance coupling by manual action on the Adjusting Lever.
(Use the Gauge Device- Tech Spec 5/7 - Ref. 580)

ADVANTAGES: Simple - Economical and Tough

Manual Pulling Rail Device «CHOELER» Type 40

- Ø 52 mm Hardened Steel Screw
- Ø 25 mm Centring Pins
- 2 Locking Keys
- 1 Adjusting Lever 0.9 m Length
- Stroke : 350 mm
- Weights : Device = 11 Kg / Lever = 3 Kg



MANUAL JACK with Chain - Type 40-C

- Power 6 Tons
- Stroke 6 m

This Device allows to pull Rails to adjust the Rail Ends Play

(It is possible to pull Spaced Rails until 4 m.)

- Weight : Ratchet 30 Kg / 2 Jaws x 16 Kg
- **OPTION** : Jaws for Tramway Rails.



GAUGE RETAINING BAR / DEVICE TO WIDEN OR NARROW THE GAUGE

SAFETY : Compulsory for tracks with broken Coachscrews or Bolts

- Body made of high-resistance steel pipping with hooks for the rail flange.
- Stroke = 240 mm
- Operates by tightening using a 38 mm hex Nut on Flats
- Length = 1.88 m. (for standard gauge 1435 mm)
- Weight = 11 Kg
- Paint yellow varnish

The Bar is positioned **UNDER THE TRACK.**

- **ELECTRICALLY INSULATED DEVICE** - Reference : **111**
- **NO-ELECTRICALLY INSULATED DEVICE** - Reference : **111-N**



(Other Gauges on request)

The Bar is positioned **ABOVE THE TRACK.**

- **ELECTRICALLY INSULATED DEVICE** - Reference : **112**
- **NO-ELECTRICALLY INSULATED DEVICE** - Reference : **112-N**



OPTION : Extension Bar (adjustable in 3 positions) for Switches and Crossings (Stroke 200 mm)

- Electrically insulated - Reference : **R-111**
- No-electrically insulated - Reference : **R-111-N**

FLAT BRUSHES, MAGNETIC BAR AND INDELIBLE CHALKS



FLAT BRUSHES

Clean the points and crossings
Clean the grooves (rail tramways)

Metal Frame
Treated steel wires Ref. **19-E**
or coconuts wires Ref. **19-C**
Net weight : 0.9 Kg
Supplied mounted with wooden handle
(Length. 1.50 m)



MAGNETIC BAR with permanent magnet

Ø 47 mm
Length 440 mm
Magnetic part length 90 mm with manually operated demagnetization.
Weight : 0.7 Kg

Cleaning of the insulated sticked Rail joints
Elimination of the intempstive incidents of shunt into the electric zones caused by the metal flakes, etc.



INDELIBLE CHALKS

Marking on the track.
The marks are unerasable on steel,
wood and concrete.
Length 88 mm
Delivered in boxes Of 12 pcs
Weight per unit = 11 gr.
Weight of 1 box = 0.15 Kg
Yellow - Ref. **306-A**
Red - Ref. **306-B**
White - Ref. **306-C**



PORTABLE RAIL-PULLING / PIVOTING DEVICE

USE: To turn and pull the rails or the switch and crossing

- Transposing the rail so, that the worn running edge is transposed to the outside
- Pulling of the rail

ADVANTAGES: Potable , tough equipment

Load capacity 6 Tons

Includes :

- 1 Base on 2 Rollers able to be rotating at 360°
- 2 Transportation Handles
- Overall Dimensions : 100 x 44 x 30 cm
- Net Weight : 84 Kg
- Paint : yellow varnish
- Reference : **57-C**



OPTION

Load capacity 12 tons - Reference **57-C2** - Net weight : 88 Kg

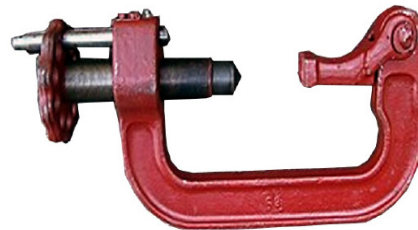


SWITCH RAIL KEY LOCK

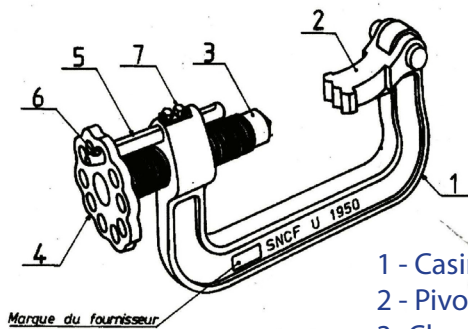
USE: Locking Switch and Crossings

ADVANTAGES: Highly Safe Equipment in forged steel (does not engage the track gauge).

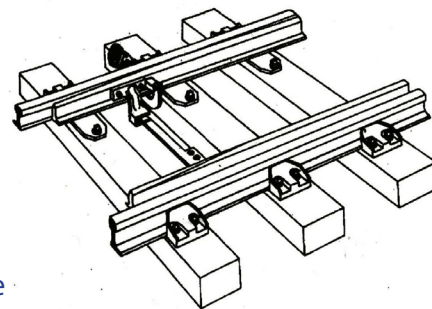
- Model French Railways « **SNCF** »
- Screw stroke : 100 mm
- 10 locking positions
- The screw is made from hardened steel with a 120° pointed end (Small Thread)
- Pivoting Rear Shoe
- Paint : brown varnish
- Overall Length : 40 x 20 x 10 cm
- Weight : 5.7 Kg
- Reference : **271**



Type 1950 Switch Rail Key Lock
(Claw 2 in Normal Setting Position)



Setting on turnout
(Fixed of the left tong)



- 1 - Casing
- 2 - Pivoting shoe
- 3 - Clamping Screw
- 4 - Clamping Hand Wheel
- 5 - Locking Rod
- 6 - Hole for Pad Lock
- 7 - Guidage screw of the rod rep. 5

OPTION

- Trapezoïdal Threaded Screw (minimum quantity = 20 p.) - Ref. **271-FT**



BALL PROBES

USE: To probe pumping sleepers that require additional occasional Tamping.

ADVANTAGES: Simple, Economical and Efficient.

For Concrete Sleepers

Ø Rubber : 140 mm
Length 1 m.
Weight : 9.3 Kg
Reference : **304-B**



For wooden sleepers

(N.F. F - 76 024)
Ø Steel : 100 mm
Length 1 m.
Weight 8.5 Kg
Reference : **304**



For Metal Sleepers

Wooden Ball Ø 90 mm (Hard Oak)
Length 1 m.
Weight 3 Kg
Reference : **304-M**





CLAMPS OF FISHPLATES

USE: Fast Tightening of Fishplates on Track (or on Work-Sites).
Tightening of stopping Shoes.

ADVANTAGES: Allow the freely circulation of the Heavy Machines on track (Ballast Cleaning Machine - Ref. 64N Model).

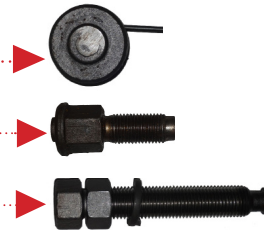
Clamp of fishplates in forged steel «SNCF» Model - Ref. 64

- Body in forged steel
- Tightening screw in hardened steel with 38 mm flat hex ends
- Ø 22 mm Centring Pins
- Tightening Screw Stroke : 100 mm
- Net weight 8 Kg
- Paint yellow varnish



Spare Parts of the Clamp of fishplates Ref. 64

- Ø 22 mm centring pins - Ref. **C-22**
- Short Tightening Screw - Ref. **V-33**
- Long Tightening Screw - Ref. **V-34**



- Spare Parts Kit = **C-22 + V-33 + V-34** = Ref. **K-64**

Clamp of fishplates - Ref. 64N

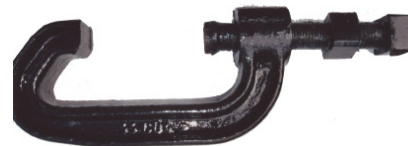
(does not engage the track gauge)

- Flat steel C-Wench
- with 2 Ø 30 mm hex head socket screws
- Ø 22 mm centring pins
- Weight : 9 Kg



Clamp of fishplates small size - Ref. 64R

- C35 CD-4 Steel
- Tightening screw : 160 mm
- Net weight 8.5 Kg



OPTIONS

- **Clamp for 230 mm Tyre-Rail- Reference : C-230**
- **Clamp for 250 mm Tyre-Rail with 2 pcs, quick tightening- Reference : C-250**



CUTTING BLOWPIPE

USE: - Oxycutting of Rail Parts, Nuts and Bolts, etc ...
- Dismantling of Tracks , etc...

ADVANTAGES: Solid and Extremely Safe to operate.

- Cutting Capacity until 300 mm
- Length 420 mm
- Oxygen and Acetylene Valves.
- 2 Rubber Wheels
- Tube Length 20 m.
- Reference : **CC-1**



OPTIONS

- **SPARE PARTS :**
 - Nozzles - Ref. **BU-1**
 - Tube Length 10 m - Ref. **TU-1**
- Cylinders Rolder Ø 210 mm, mounted on 2 Rubber Wheels Ø 400 mm (Supplied without Cylinders Gaz) - Ref. **CPB**



BALLAST PLOUGHS

USE: Ballast works by 2 Operating Agents (Bench Repair Works ; etc.)

ADVANTAGES: Simple, Tough and Practical

BALLAST PLOUGH with Exchangeable Prongs

- 4 Square Prongs
- Curved Prongs
- Width = 250 mm
- Chain Length = 1.60 m
- Wooden Handle Length = 1.10 m
- Net weight = 7.5 Kg (with Chain and handle)
- Paint black vamish
- Reference : **650**



BALLAST PLOUGH with Welded Prongs

- 4 Square Prongs
- Metal Handle
- Length 1.10 m.
- Net weight = 7.5 Kg
- Reference : **650-M**



OPTIONS

		References
▪ BALLAST PLOUGH :	▪ 5 prongs - Width 330 mm - Weight 10 Kg.....	652
	▪ 6 prongs - Width 420 mm - Weight 12 Kg.....	651
▪ SPARE PARTS :	▪ Square Straight Prong - Length = 230 mm.....	65-D
	▪ Round Curved Prong - Length = 210 mm.....	65-C
	▪ Wooden Handle - Length = 1.10 m (Ash).....	129

HAND TOOLS

Tese Specifications are given for your information only and may be technically modified and improved.



« CATALAN » CHISEL AND SLEEPER ADZING TOOLS

USE: Adzing wooden sleepers.
Retouching adzing of switch and crossings..

ADVANTAGES: This is a tough and durable chisel that can be easily sharpened.

« Catalan » chisel

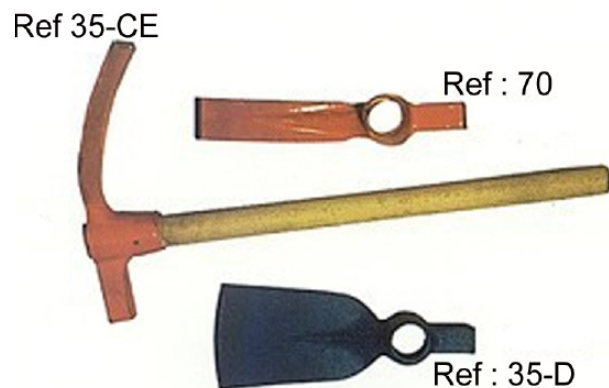
- Hardened steel
- Hex body
- Cutting width = 45 mm
- Length = 300 mm
- Weight = 1.10 Kg
- Paint : black varnish
- Reference : **1039**



Sleeper adzing tools

- Fully forged tools
- Ø 43/48 mm round eye
- Rear square heel
- Weight = 2 Kg
- Paint : Green varnish (or red)

Width of edge (mm)	References
40	70
50	70-C
60	70-B
80	35-C
120	35-D



with Handle : to add «E»
Exemple : **35-CE**

OPTIONS

- Handle adzing tool - Reference **542**



RATCHET WRENCHES

USE: Tighten and loosen the fishplate bolts..

ADVANTAGES: Simple, tough and powerful.

Type « 6 » ratchet wrench

- Total Length = 750 mm.
- With hardened steel ratchet
- Weight = 8 Kg
- Paint : black Varnish



Supplied without Sockets - See Tech. Spec. No. 3-1/2

Chain wrench type 6-V - «SNCF» model (SCHULZ)

- Total length = 1 m.
- With chain for manoeuvres and reverse gear
- Weight 7.5 Kg
- Paint : yellow varnish - Delivered with 38 mm Hex socket. (Other dimensions on request)



OPTIONS

- **Polygonal Ratchet Wrench Small Size** - See Tech. No. 12/3
- **Flat Wrenches and Socket Wrenches** - See Tech. Spec. No. 12/3



HAND T-WRENCHES

USE: Tighten and loosen the coachscrews and bolts.

ADVANTAGES: Simple and tough.

HAND «T» WRENCHES

- Carbon steel body
- Hardened pointed end
- Height = 800 mm
- Length = 700 mm
- Paint : black varnish

<p>a) For Extractor (Page 52/3) 14 mm square.....</p> <p>For tightening 18 mm square coachscrews.....</p> <p>For tightening 20 mm square coachscrews.....</p> <p>For tightening 23 mm square coachscrews.....</p> <p>For tightening 27 mm square coachscrews.....</p> <p>For tightening rectangular coachscrews, 18 x 24 mm.....</p> <p>For tightening rectangular coachscrews, 20 x 27 mm.....</p>	<p>50-14</p> <p>50-C</p> <p>50-B</p> <p>50</p> <p>50-D</p> <p>50-E</p> <p>50-F</p>
<p>b) For tightening 32 mm flat hex nuts.....</p> <p>For tightening 35 mm flat hex nuts.....</p> <p>For tightening 36 mm flat hex nuts.....</p> <p>For tightening 38 mm flat hex nuts.....</p> <p>For tightening 39 mm flat hex nuts.....</p> <p>For tightening 40 mm flat hex nuts.....</p> <p>For tightening 41 mm flat hex nuts.....</p> <p>For tightening 42 mm flat hex nuts.....</p> <p>For tightening 43 mm flat hex nuts.....</p>	<p>51-E</p> <p>51-B</p> <p>51-J</p> <p>51</p> <p>51-F</p> <p>51-C</p> <p>51-H</p> <p>51-D</p> <p>51-G</p>



References

T-WRENCH for Bolts of Concrete Sleepers

- Body in Hardness Steel
- Length 300 mm
- For threading with Clamp Screw
- Supplied without Threading-die
- Standard Ø screw-die M.22
- Weight 2.6 Kg
- Ref. **CFB** (to indicate : Ø and Thread Pitch of Bolts)



OPTIONS

- **Hand T-wrench with Long Socket** to tighten the Bolts of Long Sleepers on Metal Bridges (Threaded Rods protruding by more than 100 mm)
 - For 32 mm flat hexagon nuts.....**52**
 - For 38 mm flat hexagon nuts.....**52-C**
 - For 45 mm flat hexagon nuts.....**52-B**
- **Hand T-wrench with drill to clean** the coachscrews holes - Sheet 43/3
- **Hand T-wrench with drill to flush** coachscrews - Sheet 43/3 and 5/2



FLAT AND PIPE WRENCHES - POLYGONAL RATCHET WRENCH SMALL SIZE

USE: Tighten and loosen the bolts on fishplates and switch and crossings.

ADVANTAGES: Simple and tough. The short wrench (model 15) can be used to centre the fishplates using the pointed conical tip.

Polygonal Ratchet Wrench Small Size

Thickness=22 mm - Length=6.75cm - Weight=3.9 Kg

For 35 mm flat nuts.....	CER35
For 38 mm flat nuts.....	CER38
For 40 mm flat nuts.....	CER40
For 42 mm flat nuts.....	CER42



Thickness 22 mm

Pipe wrench - Length 80 cm - Weight 5 Kg

For 35 mm flat nuts.....	CP35
For 38 mm flat nuts.....	CP38
For 40 mm flat nuts.....	CP40



OPTIONS

Type « 6 » ratchet wrench

- Total Length = 750 mm.
- With hardened steel ratchet
- Weight = 8 Kg
- Paint : black Varnish



(Supplied without Sockets)
Sockets : See the Details - Sheet No. 3-1/2

Forged flat wrenches with Hardened Steel Forks

Short wrench with pointed conical tip
Length = 30 cm - Weight = 1.6 Kg

For 32 mm flat nuts.....	.15D
For 35 mm flat nuts.....	.15A
For 36 mm flat nuts.....	.15E
For 38 mm flat nuts.....	.15B
For 40 mm flat nuts.....	.15C



Long single-ended wrench

Length = 70 cm - Weight = 3 Kg

For 32 mm flat nuts.....	.155C
For 35 mm flat nuts.....	.155D
For 36 mm flat nuts.....	.155A
For 38 mm flat nuts.....	.155E
For 40 mm flat nuts.....	.155F



Double Flat Straight Wrench

Length 60/70 cm - Weight = 3.5 Kg
Ref. **CPD**



Double Flat Wrench with Oblique Heads

Length 60/70 cm - Weight = 3.5 Kg
Ref. **CPI**





TRACK LAYING SQUARES

USE: Check the position of the sleepers when laying or replacing sleepers

ADVANTAGES: Simple and tough.

FIXED METAL SQUARE

Track gauge (m)	Dimensions (cm)	Weight (Kg)	References
1.44	162 x 115	7.3	390
1 and 1.06	120 x 100	5	390-M
1.52	170 x 115	7.5	390-R
1676	190 x 115	8.7	390-G



FOLDING METAL SQUARE Ref. **PL** (transport casing - Ref. **ET1**)

REINFORCED WOODEN SQUARE

Track gauge (m)	Dimensions (cm)	Weight (Kg)	References
1.44	162 x 112	3.1	391
1 and 1.06	120 x 100	2.7	391-M
1.52	170 x 112	3.3	391-R
1676	190 x 115	3.6	391-G



FOLDING PLASTIC SQUARE - Reference **PVC**

For track 1.44 m - Dimensions = 164 x 115 cm

Folded = 162 x 110 cm

Weight = 7 Kg

Transport casing Ref. **ET2** = Ø 16 cm - Length 170 cm



OPTIONS

- **Insulated metal square** (for track gauge 1.44 mm) - Ref. **390-1**
- **Aluminium metal square** (Weight 4 Kg) - Ref. **390-A**



BALLAST FORK

USE: Ballasting, ballast clearing, etc. (Packing = 5 p.)

ADVANTAGES: Quality tools - with a lifetime warranty

- 9 prongs
- With socket, interior Ø 38 mm
- **Fully forged** by drawing the prongs
- HRC 29/32 hardness
- In conformity with the French Norm N.F.E. 78 001
- Width 28 cm
- Paint : red varnish
- Weight 1.8 Kg
- (Packing = 5 p.)
- Reference : **36**



POUGET TOOL with Total Warranty

OPTIONS

- Fork with Handle :
 - ♦ With Straight Handle - Length 1.10 m - Reference **36-D**
 - ♦ With Bent Handle - Length 1.35 m - Reference **36-C**
- Handles - Tech. Spec. No. 23/3





BRAKE SHOES

USE: Block the wheels of the carriage to stop.

ADVANTAGES: Simple and tough

Standard Brake Shoe (SNCF Model)

- Chromium Nickel Steel Shoe (Hardened)
- 100 % Forged Steel
- Length 500 mm
- Width of Shoe 70 mm - Reference **11** (standard)
- Width of Shoe 75 mm - Reference **11-2**
- Width of Shoe 80 mm - Reference **11-3**
- Paint yellow varnish
- Weight = 6.5 Kg



Brake with Wooden Heel

- with Steel Support Plate
- Handled
- Length = 1.55 m
- Weight = 4 Kg
- Reference : **11-T**



OPTIONS

- **Brake Shoe for Grooved Rails 35-G** - Weight 8 Kg
 - ◆ With support on the right - Reference **11-ED**
 - ◆ With support on the left - Reference **11-EG**



SLEEPERS HOOPING DEVICES

USE: Hooping new and used sleepers, particularly for resignification's operations on switch and crossings woods, longitudinal sleepers.

ADVANTAGES: Manual portable Machines that are durable and extremely simple to use.

AUTOMATIC PORTABLE PNEUMATIC HIGH EFFICIENCY SLEEPERS HOOPING DEVICE

Realizes
in 1 min.

- ▷ the Tightening of the Hoop
- ▷ the fastening of the loop
- ▷ the cutting of the strip after fastening

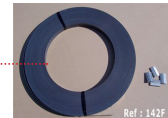
- Clamping Force : 9000 N
- Fastening of the Clips at 2 notches = 32 x 0.8 mm
- Net Weight 18 Kg
- Reference : **A-483**



Ref : A483

SUPPLY ACCESSORIES FOR A-483

- Electro-zinced steel Strip 32 x 0.8 mm (1 m. /Hoop) - Steel HR 1100 N/mm² (250 m. rolls) = 50 Kg - Ref. **142-F**



- Loops of the Hoop, Electro-zinced Steel (Packet of 1000 loops) Réf. **142-B**
- Reel containing the strip, mounted on Rubber Wheels (Weight 30 Kg) - Ref. **124055**

MANUAL SLEEPERS HOOPING DEVICE (doesn't need loop)

- Body in aluminium-bronze
- Strip 19 x 0.6 mm
- Net Weight 4 Kg
- Reference : **141-G**



SUPPLY ACCESSORIES FOR 141-H

- Varnish Strip 19 x 0.6 mm (500 m. Rolls) - 50 Kg - Ref. **141-H**
- Reel containing the Strip (Net Weight 20 Kg) - Ref. **4022**



Dévidoir Ref : 4022 pour fretteuse rail 141-G



AUTOMATIC RAIL LUBRICATING DEVICES

USE: Automatic lubrication of rails, especially curved rails (Large radius side) and for heavily stressed rails (rails subjected to winds canying sand deposits)

ADVANTAGES: Very simple operating system, does not require drilling of the rail or maintenance.

Complete and independant device for lubricating the rails, including :

- 1 grease tank Ø 0.5 m x 0.75 m high - Volume = 150 liters
- 1 integrated grease pump
- 1 automatic control device using an adjustable pedal
- 1 connection and pipe unit
- Grease-distributor, length = 0.6 m.

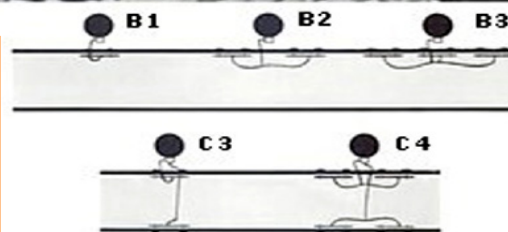


Diagram of options available ▶

OPTIONS

- Lubricating at 1 point of the rail **GAR-B1**
- Lubricating at 2 points of the rail **GAR-B2**
- Lubricating at 3 point of the rail **GAR-B3**
- Lubricating at 2 points (opposite rails) **GAR-C3**
- Lubricating at 4 points (opposite rails) **GAR-C4**



LEVER FOR LAYING RAIL ANCHORS - CHAIR-DRIVER

USE: Laying and removing rail anchors at the rail flange.
Remove chairs. (1 track on DR rail - Double railhead)

ADVANTAGES: Simple and tough. The length of the lever means less effort is needed..

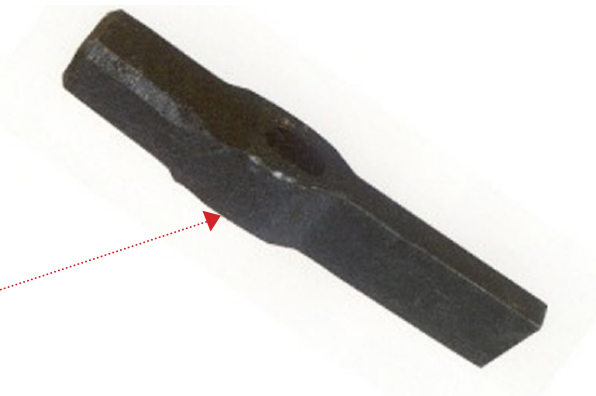
LEVER FOR LAYING RAIL ANCHORS

- Reinforced steel body.
- Its shape has been specially engineered for laying rail anchors at the rail flange.
- **Lever in 2 parts :**
- Total Length 2.20 m :
- Principal Casing = 1 m. (6 Kg)
- Demountable Lever = 1.2 m. (7 Kg)
- Paint : black varnish
- Reference : **103-A**



CHAIR-DRIVER

- Body in forged steel (bare)
- Oval eye = 40 x 22 mm
- Length = 310 mm
- Dimensions of body : 54 x 22 mm
- Weight : 3.4 Kg
- Paint = black varnish
- Reference : **2B**



Ash Handle 0.9 m. - oval 40 x 22 mm - Ref. **128**



LEVERS FOR LAYING ROLLS AND RUBBER-SHOE UNDER RAILS

USE: Free internal rail stress in continuous length of rails.

- Carrying of under-rails Steel Rolls to free internal stress in continuous Length of rails.
- Replacing of the Rubber-Shoe under rail

(In France, it is prohibited to carry out such work between the 15th of June to the 15th of September)

ADVANTAGES: Simple and Tough Tools..

SINGLE LEVER - Ref. 105-B

- Ø 30 mm x Length 1.10 m Hard Steel Lever
- Weight 7 Kg
- Paint black varnish

The 105-B Lever takes off from the top of Sleeper, and by action on the Arm, the rail is raised very easily.

DEMULTIPLICATING LEVER - Ref. LRD

- Vertical Lifting Stroke 50 mm
- Lifting Capacity 1 ton
- Lever, Length 1.20 m
- Net Weight 14 Kg
- Paint yellow varnish

The LRD Lever takes off on each side of the rail on Sleeper and by action on the Arm, the rail is raised very easily.

UNDER RAIL PLAQUE

- Ref. **PL-1** (0.65 Kg) With 1 rail and handle.
- Ref. **PL-2** (3 Kg), With 2 steel rails and handle.

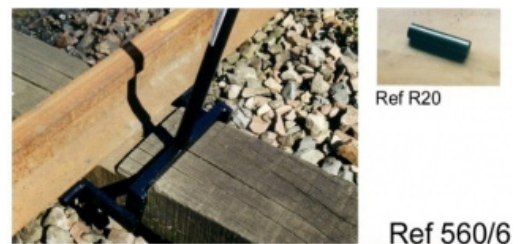
LIGHTWEIGHT Gantry Crane Model «Trestle» - Ref. 560/6

- Lifting Capacity 1 Ton
- Hoist with Security Crank Handle
- Net Weight 23 Kg
- Made in all aluminium, operated by 2 Agents (Tech. Spec. N° 34/3)

ROLLS to free internal stress in continuous Length of rails
(Hard Steel Rolls positinned under-rails)

- Ø 25 mm - Ref. **R-25**
 - Ø 20 mm - Ref. **R-20**
 - Ø 14 mm - Ref. **R-14**
- ▶ See Tech. Spec. No. 38/3

RUBBER HAMMERS - Ref. 305 to free internal stress in continuous Length of rails and other works with Handle 1.10 m - Weight 3 Kg (see Tech. Spec No. 22/3)





WAGON PINCH BARS

USE: Handling wagons in the station or in the plant.

ADVANTAGES: LA articulated lever with important force down.
Simple and tough.

ARTICULATED LEVER with wooden handle - Ref. **LA**

- with divided steel push
- Width of body = 90 mm
- Total length = 2.40 m
- Net weight = 26 Kg
- Paint : black varnish

LA ▶



Spare parts :

Wooden handle for Lever LA

Length 2.08 m - Weight 9.5 Kg - Ref. **LAM**

LEVER with aluminium - Ref. **LA-2**

Total Length : 2.40 m

Net Weight : 18 Kg

Spare parts :

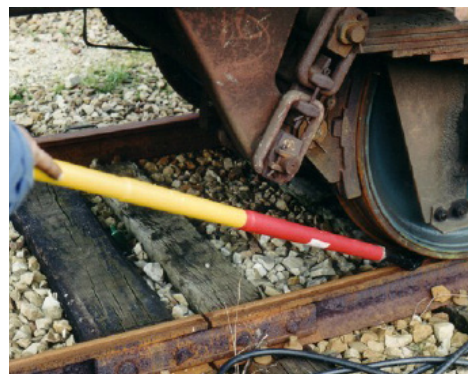
Aluminium handle for **Levier LA-2** - Ref. **LAM-2**

LA-2 ▶



MONOBLOC LEVER - Ref. **LF**

- Standard steel body
- with electrically insulated handle
- Length 2 m
- Weight = 6 Kg
- Stand paint : black varnish





FILES - MACHETE AND PRUNING HOOK

USE: Pruning vegetation and plants along the sides of the tracks.
Sharpening tools - Rail deburring (at fishplate rail joint)

ADVANTAGES: High-Quality, Durable and Guaranteed Tools : easily sharpened.

MACHETE (or cut-cut) - Ref. **27-M**

- Fully forged black blade
- With riveted wooden handle
- Total length = 55 cm
- Net weight = 0.5 Kg



PRUNING HOOK Ref. **27-C**

- Hardened steel
- Opening = 24 cm
- Total length = 40 cm
- Metal handle
- Weight = 0.85 Kg



DEBURRING FILE Ref. **10** for fishplate rail joint

- 2 tangs
- with 2 wooden handles
- Length 325 mm
- Weight = 0.4 Kg





HANDLES

USE: Handles for Hand Tools

ADVANTAGES: Mounting Handles on Railway Hand Tools. (Packets of 25 p.)

TOOLS	Length. (m.)	Material	Shape	Dimensions (mm.)	References	
Ballast forks	1.35	chestnut	bent	Ø 38	121	
	1.10	ash	straight	Ø 38	122	
	1.10	fiberglass	straight	Ø 38	127	
Shovels	1.10	ash	straight	Ø 38	122	
	1.10	fiberglass	straight	Ø 38	127	
Picks	round-eye	1	ash	round	Ø 50	123
	oval-eye	1	ash	Oval	58 x 40	124
	round-eye	1	fiberglass	round	Ø 50	133
	oval-eye	1	fiberglass	Oval	58 x 40	134
Chisels	1.3	ash	Oval	36 x 25	126	
Hammers	1	hickory	Oval	47 x 32	125	
	1	ash	Oval	47 x 32	131	
Rubber hammers	1	ash	Oval	45 x 35	130	
Adzes	0.6	ash	round	Ø 50	542	
Chair-driver	0.9	ash	Oval	40 x 22	128	
Ballast ploughs	1.10	ash	round	Ø 42	129	
Augers (with flat shank)	0.45	ash	round	Ø 50	541	
Augers (with square shank)	0.45	ash	round	Ø 50	541-C	
Nylon hammer	0.8	ash	oval	50 x 32	135	





SLEDGEHAMMERS AND HAMMERS

USE: As need for all work on the track, for welding rails.
Free internal rail stress in continuous lengths of rails and other work.

ADVANTAGES: Tough and economical.

Forged steel sledgehammers oval eye (without handle) - Paint : black varnish

Weights	References
5 Kg	14
4 Kg	14-B



Rubber sledgehammers Ø 130 mm to free internal rail stress in continuous lengths of rails with 1 m oval handle.
Weight = 3 Kg
Référence : **305**



Bronze sledgehammers with Fiberglass Handles (Total length = 84 cm)

Weight (Kg)	References
3.2	305-C1
4.3	305-C3
5	305-C4
7.3	305-C5
8.7	305-C2



Nylon Track Hammer Ø 85 mm with Oval-Handle, Length 0.9 m , Weight 3.5 Kg - Ref. **14-N**
Handle 50 x 32 - Length 80 cm - **Ref. 135**



Track-Hammer with handle - Length = 40 cm - Weight = 1.5 Kg Reference : **142**

OPTIONS

- Steel Sledgehammer with 1 m. Wooden Handle (Hickory) - (Weight oh the Handle = 1 Kg)

Weight (Kg)	References
5	14-E
4	14-BE



- With Unbreakable Fiberglass Handle :

Weight (Kg)	References
5	14-P
4	14-BP





RAIL-LIFTING HOIST

USE: Accessories for trolleys and gantry cranes.

ADVANTAGES: Tough tools with a safety brake. Complies with European Safety Standards

RAIL-LIFTING HOIST

1) LIFTING CAPACITY 1000 Kg

- 4 **steel** Rollers - ref. **560**
- 1 standard rail tong, ref. 661
- Weight 24 Kg

- 4 **aluminium** Rollers- ref. **562**
- 1 standard rail tong, ref. 661
- Weight 21 Kg



2) LIFTING CAPACITY 1600 Kg

- 4 **aluminium** Rollers - ref. **561**
- 1 reinforced forged steel rail tong, Ref. **662**
- With 1 crank handle lifting device
- Weight 22 Kg

RAIL TONGS Ref. 661/662 - See Tech. Spec. No. 43/3



Rail tong for tramways
ref. **662-T**



Rail Tong for Metro
(Current Rail)
ref. **662-BG**

OPTIONS

- Raised Hoist mounted for using with Trolley ref. **BL**
- Special Rail Tong (Spec Tech. No-44/3)

HAND TOOLS

Tese Specifications are given for your information only and may be technically modified and improved.



SHOVELS

USE: Earth-Works (Packets = 10 p.)

ADVANTAGES: Tough Shovels, Guaranteed to be the Finest Quality, High-Resistance Steel Heat treatment throughout the full length.

STANDARD SHOVELS (Ø 38 mm Socket)

Width (cm)	Unit weight (Kg)	Reference
29	1.4	201
31	1.6	202
33	1.8	203

« St Etienne » SHOVELS (Ø 38 mm Socket)

Width (cm)	Unit weight (Kg)	Reference
29	1.7	204
31	1.85	204-B

SQUARE SHOVELS with fold back edges

- Ø 38 mm socket
- Width 23 cm
- Weight = 1 Kg
- Référence : **205**

DRIVER SHOVEL

- Dimensions = 35 x 28 cm
- With D handle
- Weight with handle = 3.3 Kg
- Reference : **206**



OPTIONS

- **Handles** : See spec **22/3** (Length 1.10 m)
- **Aluminium shovel** - Width 24 cm - Weight 0.5 Kg **204-AL**



ROD CROWBARS

USE: Rail Handling Works.

ADVANTAGES: Durable and Lightweight

- Ø 30 mm hard steel
- Conical tips
- Hardened tips
- Paint black varnish



Total Length (m)	Weight (Kg)	Reference
1	5	431
1.30	6.7	431-L
1.50	7.8	431-M

OPTIONS

- **Quater Crowbar** : See Tech. Spec. No. 27/3





RAIL QUARTER CROWBARS

USE: Rail Handling Works.

ADVANTAGES: Durable and Lightweight.

« SNCF » Model

- 4 rotating lugs
- 1 tube steel arm
- Length 1.05 m
- Paint : black varnish
- Weight 5.5 Kg
- Reference : **430-B**



« Enterprise » model

- Completely forged (pour rail Vignole et Tramway)
- Ø 25 mm hard steel arm
- Hardened pointed end
- Length 1.05 m (NF. F. 76.005)
- paint black varnish
- Weight 6.2 Kg
- Reference : **430**



OPTIONS

- **Rod crowbar** : See Tech. Spec. No. **26/3**





TRACK SHIFTING CROWBAR

USE: Track shifting, track alignment works.

ADVANTAGES: Guaranteed and tough.

- Ø 35 mm Hard steel
- Hardened pointed end
- 1 ball at one end
- Paint : black varnish
 - Body Ø 35 mm - Length **1.65** m - Weight 13 Kg - Reference : **4**
 - Body Ø 35 mm - Length **1.80** m - Weight 14.5 Kg :
 - ▷ with eye (NF. F. 76 006) - Ref. **44**
 - ▷ without eye..... - Ref. **44-S**



OPTIONS

- **Sleepers Spacing Crowbar** : See Tech. Spec. No. **30/3**



PINCHING BARS

USE: Works of Lifting Rails, Plates, etc...

ADVANTAGES: Tough and Guaranteed.

- Octagonal hard forged steel
- Hardened heel and tip
- Paint : red varnish (or black)

Width of Heel (mm)	Length (m)	Weight (Kg)	References
25	0.48	1.45	104-D
36	1	5	104
39	1.25	8.5	104-B
42	1.50	12	104-C





SLEEPERS CROWBARS

USE: Sleepers Spacing Works.

ADVANTAGES: Durable and Lightweight.

French Railway model « SNCF »

- Ø 30 mm hard steel
- Length 1.50 m
- 1 ball at one end
- 1 hardened nib at the other end
- Weight 7.3 Kg
- Paint: black varnish
- Reference : **42**



Ref. **42**

« Enterprise » Model

- Ø 25 mm hard steel
- Length 1.20 m
- 2 hardened nibs
- Weight 4.5 Kg
- Paint: black varnish
- Reference : **42-B**



Ref. **42-B**

OPTIONS

- **Track Shifting Crowbars** : Tech. Spec. No. **28/3**



PICKS

USE: Earthworks, Ballast Clearing, Manual Tamping, etc ...

ADVANTAGES: Tough and Guaranteed Tools

- Hard full-forged steel.
- Hardened ends
- Paint : black varnish or green

BALLAST CLEARING PICK (4 Kg)

- Round eye Ø 43/48 mm
- Length 85 cm
- Reference : **242**

(Option : Length 110 cm - Weight 4.5 Kg - Ref. **242-L**)



PICKS HEAD

- Pick and plate
- Length 60 cm
- Weight 3.5 Kg
- ▷ **Round eye** - Ref. **72**
- ▷ **Oval eye** - Ref. **72-B**



TAMPING PICKS

- Length 60 cm
- Weight 4 Kg



- ▷ **Oval eye** (Standard model NF. F. 76 007) :
 - Beater / Plate - Ref. **244**
- ▷ **Round eye** :
 - Beater / Plate - Ref. **244-B**
 - Beater / Pick - Ref. **244-C**

Luxembourg Tamping Pick

- Forged Steel - Length 50 cm
- Plate/Pick
- Oval Eye
- Weight 2.2 Kg
- Reference : **244-CFL**



OPTIONS

- **Wooden Handles** : See Tech. Spec. No. **22/3**



MANUAL LIGHTWEIGHT PLATFORM TROLLEYS - NEW GENERATION

USE: Transport of all equipment and materials on the track over short distances.
Max load : 500 Kg to 2 tons.

ADVANTAGES: Guaranteed, lightweight (aluminium) and tough equipment that offers total safety of use.

All our platform Trolleys are equipped with **BRAKING DEVICES** and the 4 wheels are electrically insulated.

They are designed with 2 side handles for manipulation by the Operating Agents.

Standard dimensions (for 1.44 m track) : 175 x 75 cm / (for Metric Gauge) : 132 x 75 cm

The Brake Lever can be positioned on the two sides and is dismantable.

REFERENCES		Load Capacity (Kg)	Parking Brake on 2 Wheels	AUTOMATIC BRAKE		Weight (Kg)
				on 2 Wheels	on 4 Wheels	
PL1T		500	x			48
PL2T		1000	x			52
PL5S		2000		x		63
«SNCF» AGREED						
STANDARD	LGV Ref. (*)					
PL1S	PL1S-LGV	500		x		53
PL2S	PL2S-LGV	1000		x		57
PL3S	PL3S-LGV	500			x	55
PL4S	PL4S-LGV	1000			x	59

(*) **LGV Models**, New Generation are authorized to circulate on High Speed Lines and on Standard Tracks. Height of the Floor at the Running Surface of the rail = 280 mm

Double lightweight platform Ref. PL5S-GR Trolley with automatic brakes and Lateral wheels
Load capacity : 2000 Kg
Dimensions = 200 x 175 cm

OPTION

- **MOTORIZED PLATFORM** - See Sheet No. 5/4
- **LARGE-WIDTH PLATFORM TROLLEY** - Ref. **GL**
- **SIDE ROLLERS** - Ref. **GR**
- **ODOMETER** with Trolley - Tech. Spec. No. 6/7

Manual Super-Lightweight Platform Trolley - Ref. **PL6S**
Load Capacity : 500 Kg
Dimensions = 175 x 50 cm
Weight : 25 Kg



coupled with Odometer

Braking with Linkage



HAND TOOLS

These Specifications are given for your information only and may be technically modified and improved.



LIGHTWEIGHT GANTRY CRANES FOR RENEWAL OF RAILS

USE: Renewal of Rails and Switches and Crossings, (lifting and lining of the Track).
Loading and unloading Switches and Crossings on Track Motor Car.

ADVANTAGES: Highly Safety Equipments - Easy to dismantle and transport.

- Horizontal beams made from reinforced aluminium alloy.
- Steel legs with wheels for carrying on rails and handles.

Length Horizontal Beam (m)	Lifting Capacity (Kg)	Quantities			Hoist control	Weight gantry crane alone (Kg)	Ref.	Size
		Fixed Leg	Adjustable Leg	Hoist				
1.2	1000	1	1	1	Crank Handle	49	559/1	Small
1.8	1000	1	1	1	Crank Handle	75	560/2	Medium
			2	1	Crank Handle	86	560/23	
3	1600		2	1	Crank Handle	120	560/3	Large
	2000		2	2	Crank Handle		560/31	
	1600		2	1	with Chain		560/32	
	2000		2	2	with Chain		560/33	
3.5	3200		2	2	with Chain	130	560/34	Super-Large



SNCF AGREEMENTS	
Agreed Models	Nos. Agreements
560/2 and 560/23	DPI-14205
560/3	DPI-14204



OPTIONS

- **The Ref. 560/34** with Pivoting Transport Wheels Device allowing to circulate on Auxiliary Lateral Rails : (**Track Center's = 3.30 m**)
- **Rail Tong with Rollers for moving the Rail Ref. 61** (see Sheet No. 43/3 and 44/3)
- **Trestle Gantry Crane 560/6** (see Sheet No. 34/3)



LIGHTWEIGHT TRESTLE GANTRY CRANE

USE: Lifting of the Rail for Various Purposes. Lifting and Lining of the Track.
To change the rubber plates under the rails, and other works (weldings, ...)

ADVANTAGES: Lightweight and durable equipment (all-aluminium construction).

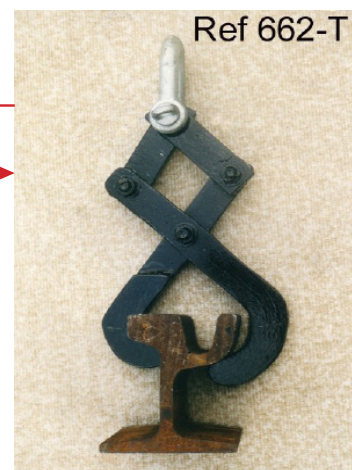
LIGHTWEIGHT TRESTLE GANTRY CRANE Ref. 560/6

- Lifting Capacity = 1000 Kg
- Reinforced aluminium Body
- Aluminium Legs with Handles
- Lifting Stroke = 55 cm
- Height = 1 m
- Footing = 45 cm
- Chain Hoist with Safety retaining Brake, and Standard Rail Tong Ref. 661
- Weight = 23 Kg (with Full Hoist)



OPTIONS

- **LIFTING CAPACITY 2000 Kg** with Tong Ref. 662 - Ref. 560/7
- **Tong for Tramways (Grooved Rail)** - Ref. 662-T
- **Tong with Rollers for moving the Rail** (Sheet No. 44/3) - Ref. 61





SWITCH AND CROSSING ROLLERS

USE: Launch switch and crossing, 2 positions :

- Lengthwise
- Crosswise

ADVANTAGES: Durable, Simple and Safety Equipment.

- All-Steel Body
- 2-Flange Steel Wheel - Operating $\varnothing = 100$ m
- Attachment Flanges with Safety Keys (for 2 Positions)
- Unit Load Capacity = 6 tons
- Designed for Rails upto 60 Kg/m and Grooved Rails
- Unit Weight = 25 Kg
- Reference : **57-A**

1st Position



2nd Position



Other Rail Rollers : See Sheet No. 38/3



RE-RAILING RAMPS

USE: Re-rail derailed wagons.

ADVANTAGES: Tough and Reliable Tool.

- Cast, High-Reinforced Steel Body.
- for Vignole Rail, Max Width : 74 mm
- Width of a Ramp at the base = 690 mm
- Width of the Head = 220 mm
- Total Length = 860 mm
- Unit Weight : 105 Kg
- Paint : Black Varnish
- Reference : **R-9**



(This Device is supplied in 2 pcs)

OPTIONS

- **Re-railing screw lifting jack** - Ref. **VM** (Tech. Spec. No. **37/3**)
- **Track Jacks** (See Sheets NO. 3/5)



MECHANICAL SCREW LIFTING JACKS

USE: Re-railing of derailed Wagons

ADVANTAGES: Tough Equipment, both durable and simple to use.
Excellent price / force ratio.

- Steel Body and Carriage
- Steel Screw and Head
- Bronze, High-Resistance Nut for the Vertical Screw Arm Carriage Slide Nut.
- Delivered complete with two Operating Ratchets.
- Paint : yellow varnish
- References : **VM-71 to VM-77**

Type		71	72	73	74	75	76	77
Lifting Capacity	T	5	10	15	20	25	30	50
Ø Screw	mm	49	59	69	74	83	89	100
Lifting Stroke	mm	220	230	230	230	230	230	200
Mini Height	mm	490	510	580	580	610	650	700
Horizontal Stroke	mm	170	270	330	330	330	330	300
Unit Net Weight	Kg	37	55	65	75	80	85	90



OPTIONS

- **RE-RAILING RAMPS** - Ref. **R-9** - See Tech. Spec. No. **36/3**
- **HYDRAULIC JACKS** (See Tech. Spec. 2/5)



RAIL ROLLERS

USE: Travelling of rails. Free internal rail stress in continuous lengths of rails .

ADVANTAGES: Durable and Lightweight Equipment..

SINGLE STEEL-ROLLER - Ref. **571**

- Load capacity = 3 tons
- 48 x 18 cm base with handle
- Weight 15 Kg
- Paint : yellow varnish



DOUBLE STEEL ROLLER - Ref. **57-B**

- Load capacity = 6 tons
- 53 x 40 cm base
- Weight 33 Kg
- Paint : yellow varnish

Option : Capacity 12 tons ref. **57-B2**



LIGHTWEIGHT STEEL-ROLLER - Ref. **570**

- Load capacity = 1 ton
- 40 x 20 cm base-handle
- Weight 13 Kg
- Paint : yellow varnish



STEEL ROLLERS to free internal rail stress in continuous lengths of rails.

- Ø 14 mm - Ref. **R-14**
- Ø 20 mm - Ref. **R-20**
- Ø 25 mm - Ref. **R-25**



See also the Tech. Spec. No. **20/3**

Under-Rail PLAQUES - Ref. PL-1 / PL-2

OPTIONS

- **RAIL TURNER** (See spec.Nº. 3/3), Capacity 6/12 tons
- **SWITCH AND CROSSINGS ROLLERS** (Tech. Spec. No.35/3) - Ref. **57-A**



HANDSAWS

USE : Sawing (Rails / Sleepers)

ADVANTAGES : Tough, High-Yield Equipments.

SAW FOR RAILS - Ref. **8**

- supplied for 500 mm Blade.
- Dimensions = 63 x 26 x 4 cm
- Weight = 2.5 Kg
- 500 mm Blades Ref. **923** (Packets of 10 p.)



TIMBER SQUARING SAW - Ref. **27**

- For Repairing the Sleepers Shoulders
- 2 Arms - Length 1.08 m.
- Weight 2.7 Kg
- Blade Ref. **925** : Length: 400 mm
Weight : 0.9 Kg



WOOD SAW - Ref. **1034-S**

- Metal Frame
- Weight 1.2 Kg
- Blade: Length = 800 mm
(Packet of 10 p.) - Ref. **924**



CROSSCUT SAW - Ref. **270**

- 2 Dismantable Handles, with Position Adjustment.
- Length : 135 cm
- Isocele Tooth Blade - 18 mm Pitch
- Weight 1.9 Kg





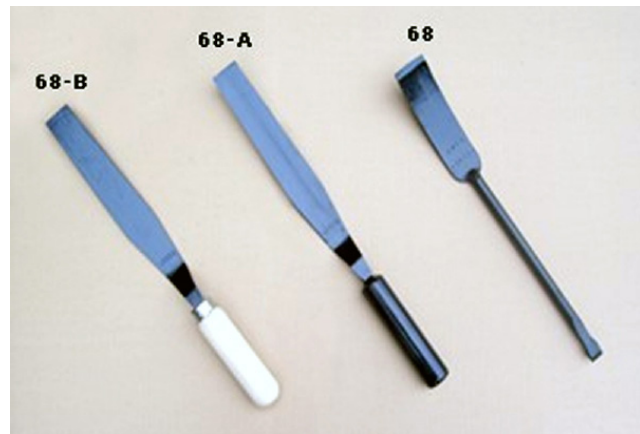
PALLETS - SCRAPERS

USE: To peel off the rubber sole plates under the rails
To replace the sole plates
To Clean the switch and crossings.

ADVANTAGES: Tough and Efficient Tools.

STANDARD PALLET

- Flexible steel to peel off the Rubber pads under the Rails.
- Total Length = 46 cm
- Weight 0.7 Kg
- Paint Black Varnish
- With metal handle - Ref. **68-A**
- With wooden handle - Ref. **68-B**



SCRAPER - Ref. **68**

Used to clean the Switches and Rails, etc...

- Fully forged Steel Body
- Cutting Widths = 45 and 20 mm
- Total length = 420 mm
- Hardened Ends
- In accordance with the French Norm F. 76 009
- Weight 0.6 Kg
- Paint: Black varnish

OPTIONS

- **Wooden Handle** for **68-B** - Ref. **68-BM**



SAFETY MOVABLE BRAKE

USE: Holding wagons when stopped.

ADVANTAGES: Simple and Effective.

- Steel Body
- Blocking Pad under the Wagon Wheel
- 1 Pivoting Flat Bearing
- 1 Triangular red Flag (Plastic)
- Length of the Block : 420 mm
- Total Length 910 mm
- Weight 3.2 Kg
- Paint : White varnish
- Reference : **11-MA**



This device is part of **Track Security Set** (Sheet No.47/3)

OPTIONS

- Safety Movable Brake with Box red-yellow - Ref. **11-MA-B**
- Metal Support for 6 pcs Safety Movable Brakes - Ref. **S-11MA**
- Other Brake Shoes for Wagons - See Sheet 15/3





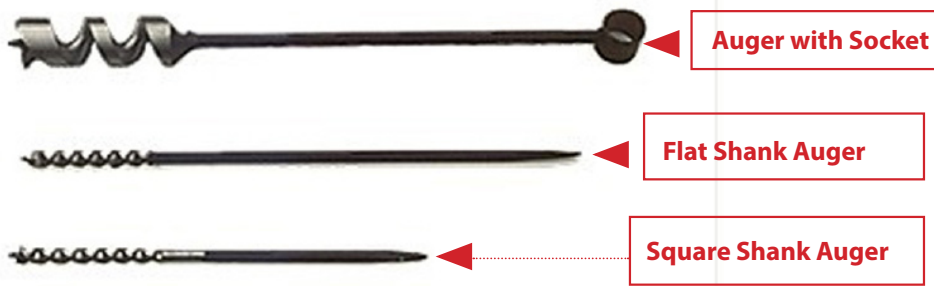
HAND DRILL AUGERS

USE: Drill and Bore Sleepers (Packets of 10 p.).

ADVANTAGES: Quality Tools made from Hardness Steel.

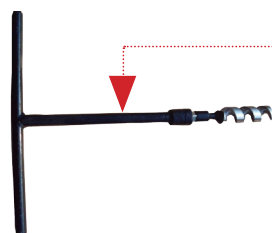
Ø mm	Square Shank Length 420 mm	Flat Shank Length 600 mm	With socket Length 400 mm	Unit Weight gr.
12	56/1	59/1	48/1	300
14	56/2	59/2	48/2	350
15	56/21	59/21	48/3	400
16	56/3	59/3	48/4	420
17	56/31	59/31	48/5	430
17-22	56/32	59/32	48/32	440
18	56/4	59/4	48/6	440
19-20	56/5	59/5	49/5	440
22	-	-	47/1	450
25	-	-	49/6	500
52	-	-	47/3	980
60	-	-	47/4	1150

- Use the wooden handle for flat shank augers (Spec. N° 23/3) - Reference : **541**
- Use the drill bit brace for square shank augers (Spec. N° 47/3)



Drills with 23 mm square drive			
Ø (mm)	Ref.	USE	Length (mm)
20	49/5	To clean the Holes of Coachscrews	170
25	49/6		170
52	49/7	To flush the Coachscrew	170

Drill ref. **49/7**



Drilling Tool ref. **49/7-T**
Total Length 970 mm

Drilling Tool ref. **549/7**



HAND TOOLS

These Specifications are given for your information only and may be technically modified and improved.



RAIL TONGS

USE: Handling rails (on tracks or at working site)

ADVANTAGES: Very Tough Tools with Guarantee.

STANDARD RAIL TONG with Shackle **Force 1.6 ton** - Ref. **661**

- Length 23 cm - Weight 1.9 Kg - Paint : Black Varnish

Reinforced, DROP-FORGED Steel Rail Tong with Shackle, **Force 2 tons** - Ref. **662 (For Vignole Rails)**

- Aperture 155 mm - Length 45 cm - Weight 2.5 Kg
- For Grooved Rail - Ref. **662-T**

REAIL-TONG for Guiding-bar (Metro)
Ref. **662-BG**



RAIL TONG with Rollers and Safety Locking Device (moving the Rail) - Ref. **61**

- Aperture 80 mm - **Force 2 tons** - Weight 17 Kg

HAND-RAIL TONG for carrying for Vignole Rails - Ref. **18-D**

- Up to 60 Kg/m - Hot-Riveted - Paint : Black Varnish - Weight 9 Kg

TONG FOR CRANE with High-Resistance Chain and Rings - Ref. **75**

- **Lifting Capacity 10 Tons** - Total length 1.27 m - Weight 24 Kg

OPTIONS

- **HAND-RAIL TONG for Grooved Rail** (Tramways)- Ref. **18-DT**
- **REINFORCED RAIL TONG** - Force 2 Tons grooved rails (RI60 / 35G) - Ref. **662-T**
- **SPECIAL RAIL TONGS** - See Sheet 44/3



SPECIAL RAIL TONGS

USE: Handling rails (on tracks or at working site)

ADVANTAGES: Very Tough Tools with Guarantee.

RAIL TONG for Guiding-Bar (Metro)
Ref. **662-BG2**



TRACK-TRAFFIC TONG for runway width :

- 230 mm - Ref. **TP-230**
- 250 mm - Ref. **TP-250**
- 280 mm - Ref. **TP-280**



RAIL TONG for Crane - Force 2 tons
Ref. **662-BG**



TRACK-TRAFFIC TONG
for runway
Réf. **662-BG3**



RAIL TONG with Rollers
and Safety Locking Device
(moving the Rail) - Ref. **61**





SLEEPER TONGS

USE: Handling of Sleepers (wooden and concrete)

ADVANTAGES: Tough (forged steel) and Lightweight

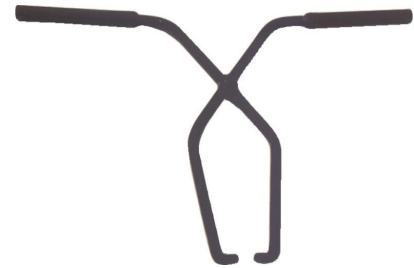
WOODEN SLEEPER TONG - Ref. 610

- 2 Steel Tube Ø 35 mm Handles
- Length of Arms = 610 mm.
- Forged Steel with Hardened Jaws
- Weight 5.2 Kg
- Paint : black varnish



CONCRETE SLEEPER TONG - Ref. 55

- 2 Steel Tube Ø 35 mm Handles
- Length of Arms = 1 m.
- Forged Steel with Hardened Jaws
- Weight 7.5 Kg
- Paint : Black Varnish



WOODEN SLEEPER TONG WITH RINGS (for crane) - Ref. 610-M

- Load capacity = 500 Kg.
- Length of the tong = 900 mm.
- Forged steel
- Weight 10 Kg
- Paint : black varnish



OPTIONS

- **HAND RAIL - TONG** (Tech. Spec. No. 43/3) - Ref. 18-D
- **CONCRETE SLEEPER TONGS** with shackle (for mechanized device) - Ref. 55-M



DRILL BIT BRACE

USE: To drill sleepers on the track, with square shank augers (See Spec 42/3).

ADVANTAGES: Simple and Tough.

- Body in forged Steel
- Taken of the Auger by Taper Square Hole (Diameters on sheet 42/3).
- Tightening by Wing Screw.
- Central Handle in steel
- Upper Handle in aluminium
- Length 780 mm
- Paint : black Varnish
- Weight = 2.7 Kg
- French Norm 76020
- Reference : **17**



OPTIONS

- **SQUARE SHANK Augers for Bit Brace** - See Tech. Spec. No. **42/3**
- **Wooden Handle** for SQUARE SHANK Augers - Ref. **541-C**

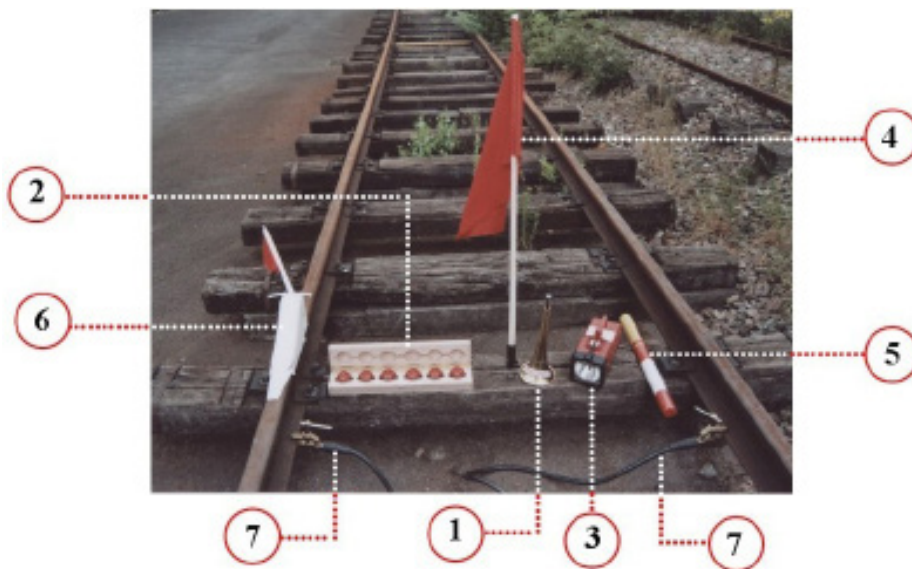


SEC-1 TRACK SECURITY SET

This Set of Security **SEC-1** is compulsory for all tracted Materials circulating on Track and for all Works on Track.

It comprises :

Rep.	Désignations	Spec. No.	Reference	Weight Kg
1	1 Horn , length 350 mm	2/9	1038	0.26
2	1 Wooden Case with 6 Security Detonators . Dimensions : 500 x 90 x 65 mm	10/9	C-1036	1.68
3	1 Signal Lamp 3 Lights rechargeable 220 V Dimensions : 26 x 12 x 17 cm	7/8	L2F	2.1
4	1 Red Flag , Length 1 m. with Conical metal Tip	7/9	DRPM	0.65
5	1 Red Flare 8 minutes Ø 50 mm x length 540 mm	9/9	1037	1.14
6	1 Safety Movable Brake with Red Flag Length of the Block : 42 cm Total Length with the Flag : 91 cm The Flag may be standing perpendicular to the Track.	41/3	11MA	3.2
7	1 Shunt-Cable of the Rails , Length 2 m. (electrically insulated), with 2 Tightening Rail-Clips. Maxi amperage : 270 A	12/9	CS-1	3



OPTION :

ROLLING KNAPSACK for Transport of the Track Security Set and hand Tools
Dimensions : 55 x 38 x 25 cm
Weight = 4 Kg
Ref. **SDR**





FASTCLIP MANUAL LEVERS

LEVER to put the **FASTCLIP**
 Level in High-Resistance Steel
 Length Lever 1.25 m
 Weight : 6.8 Kg
 Paint : Yellow and Green
 Reference : **107-CL**



LEVER to put down the **FASTCLIP**
 Lever in High-Resistance Steel
 Length Lever 1.15 m
 Weight : 7 Kg
 Paint : White and Green
 Reference : **107-DCL**





PANDROL MANUAL LEVERS

These Levers are used for the Pandrol Clips - Type **E**, **P** and **PR** .

LEVER for the Installation of PANDROL Clips

Lever in High-Resistance
Length Lever 1.25 m
Weight : 6 Kg
Reference : **110-CL**



LEVER for the Removal of PANDROL Clips

Lever in High-Resistance Steel
Length Lever 1.15 m
Weight : 6.5 Kg
Reference : **110-DCL**



FLEXIBLE STAIRS FOR TRACK BENCH AND EMBANKMENT

USE: They allow to go up the Material and Tools up to on Track.

ADVANTAGES: Lightweight Material joining up Large Lengths.

These Flexible Stairs in anti-skidding rubber, very strong are used to allow the struggled up of materials, tools along the track on the Track.

Connecting Wrench, can be used as Transport Handle.



A = 1.60 m
B = 0.40 m
Height of 1 Step = 65 mm
Weight = 9 Kg



Units of the Flexible Stairs connected **end to end.**

Ref. EMT

Flexible Stairs folded up in position of transport.



Units of the Flexible Stairs connected **side by side.**

Ref. EMT



Ref. EMT-V

Junction to the Track by 1.60 x 0.40 m Units of the Flexible Stairs

- Between Units by an integrated Connecting Wrench **side by side** or **end to end** with the Locking Wrenches.
- to the Track**, by Hooks under the Foot of the rail linked chains in steel.

References :

- Units of Flexible Stairs with connecting Wrench locked by safety Pin - Ref. **EMT**
- Units of Flexible Stairs connectable to the Track with Hooks + Chains (see the photo above) - Ref. **EMT-V**



HANDLES PANEL-HOLDER

Manual Transport of panels by 2 Agents in total Security.

These handles panel-Holder allow to lift heavy Loads in reducing the efforts and the Constraint.

Manufacturing in aluminium with a device Auto-fitting and anti-sideslip.

Opening 0 to 80 mm - Ref. **PPP-1**

Opening 40 to 120 mm - Ref. **PPP-2**

Opening 80 to 160 mm - Ref. **PPP-3**





RAMMER FOR COACHSCREWS

USE: Extruding of broken Coachscrews inside Sleepers.

ADVANTAGES: Tough and Reliable Equipment.

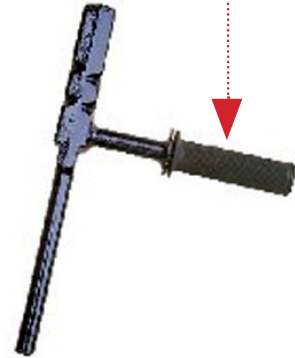
RAMMER FOR EXTRACTION OF BROKEN COACHSCREWS

- Fully forged steel body with indentations
- Ø 19 mm tip
- Hardened Length 180 mm
- Total Length 360 mm
- Weight 1.9 Kg
- Paint black varnish

Without handle Ref. **37**



With handle Ref. **37-H**



PUNCH - Ref. **37-P**

On request, this Tool can be used as Punch : (2 functions)

- 1 - Checking before drilling in the Center of the Coachscrew
- 2 - Extraction of the Coachscrew by means an Extractor with a Square Bit Drive - Ref. **EXT**

OPTION

- **Complete Set for extraction of broken coachscrews** (Agreed by SNCF) - see Sheet 53/3



EXTRACTION SET OF BROKEN COACHSCREWS - Ref. **K-EXT**

Désignations	Reference	Photo
1 WOODEN CASE with handle, containing :	COK	
1 Petrol DRILLING MACHINE (with an automatic Chuck)	SL-19	
1 CHUCK for bits with Graffenstaden Shank (option)	MAG	
1 HAND «T» Wrench 14 mm Square	50-14	
6 HSS DRILLS Ø 6 mm HSS	6-HSS	
3 Carbid DRILLS Ø 12 mm	12-CA	
1 EXTRACTOR	EXT	
1 NYLON BRUSH	PN	
1 centre PUNCH	37-P	
1 HAMMER with Handle 1 Kg	MR-1	
1 Ear PROTECTOR	CAB	
1 LUBRICANT / UNJAMMING 400 ml	LD	
1 Petrol TANK 5 liters (empty)	JC-5	



NOTES



8, allée du Val du Moulin - B.P. 69
93240 STAINS - FRANCE

Tél. : 33. (0) 1.48 26 62 12 / +33 (0) 9 75 90 59 48

Fax : 33. (0) 1.48.22.37.15

E-mail : pouget.rail@wanadoo.fr

www.pougetrail.com



CATALOGUE

MACHINES & TOOLS

for Track Construction and Maintenance

SINCE 1935